

BUILDING
YOUR TIME

PATRIMI

Villas Liège & Leuven Phase II

Detached villas at La Finca Golf



**BUILDING
YOUR TIME**

Liège & Leuven. Phase II

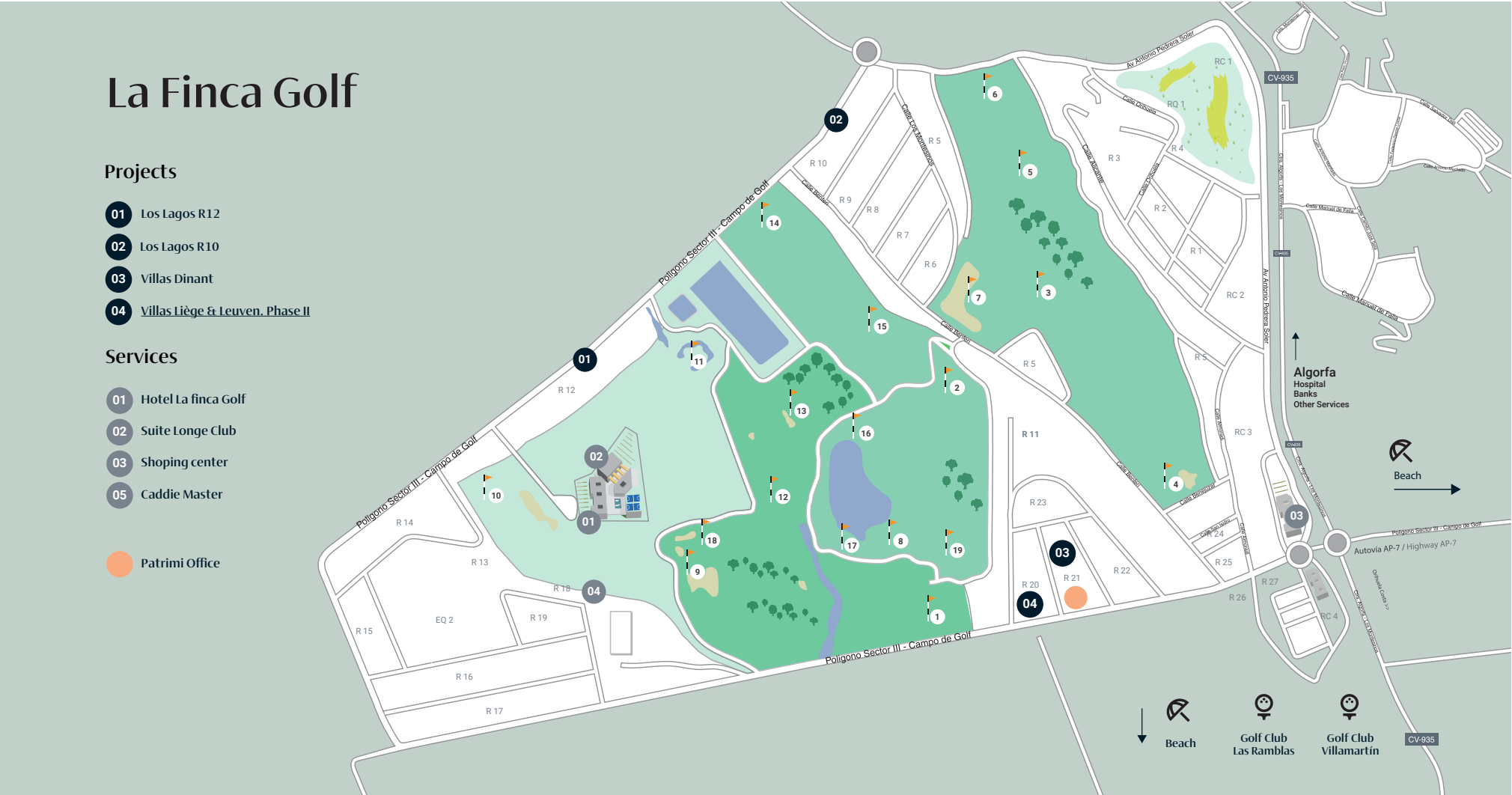
Location

The R20 development is located at La Finca Golf Resort belonging to Algorfa town, Alicante south. A relaxed and healthy landscape surrounded by nature with a great offer in its services, leisure and sports services. Just a few kilometres far away from the most stunning beaches in the Costa Blanca.

Near projects

Villas Ele, Villas Dinant, Lagos R12

 Calle Benijofar SN, Algorfa Orihuela Costa, Alicante.



Liège & Leuven. Phase II

Surfaces

Num.	Model	Plot	Num.	Model	Plot	Num.	Model	Plot
2012	Liège	434	2016	Leuven	433	2020	Leuven	463
2013	Liège	393	2017	Leuven	422	2021	Leuven	478
2014	Liège	380	2018	Liège	390			
2015	Leuven	435	2019	Leuven	392			

All measures are expressed in M2.



Liège & Leuven. Phase II

Light, space and elegance

The project

The project is composed by 21 luxury detached villas with two different models available: Liège and Leuven. These villas connect us with the ancient Mediterranean cultures and building tradition combined with the modern architecture to create charming homes, reflecting our commitment and effort to offer you the best in space and design trends.

Features

 3 

 2





Liège & Leuven. Phase II

Light is the main character

General finishes

White is the main colour in painting and Zenit mechanism. The inside doors in the same colour and stainless-steel square door handles.

The interior porcelain tiles, model Davos blanco. The built-in wardrobes are finished with white smooth sliding doors.

Other Finishes

✱ Air-conditioning pre-installation.

☎ Alarm system totally fitted with interior and exterior camera.





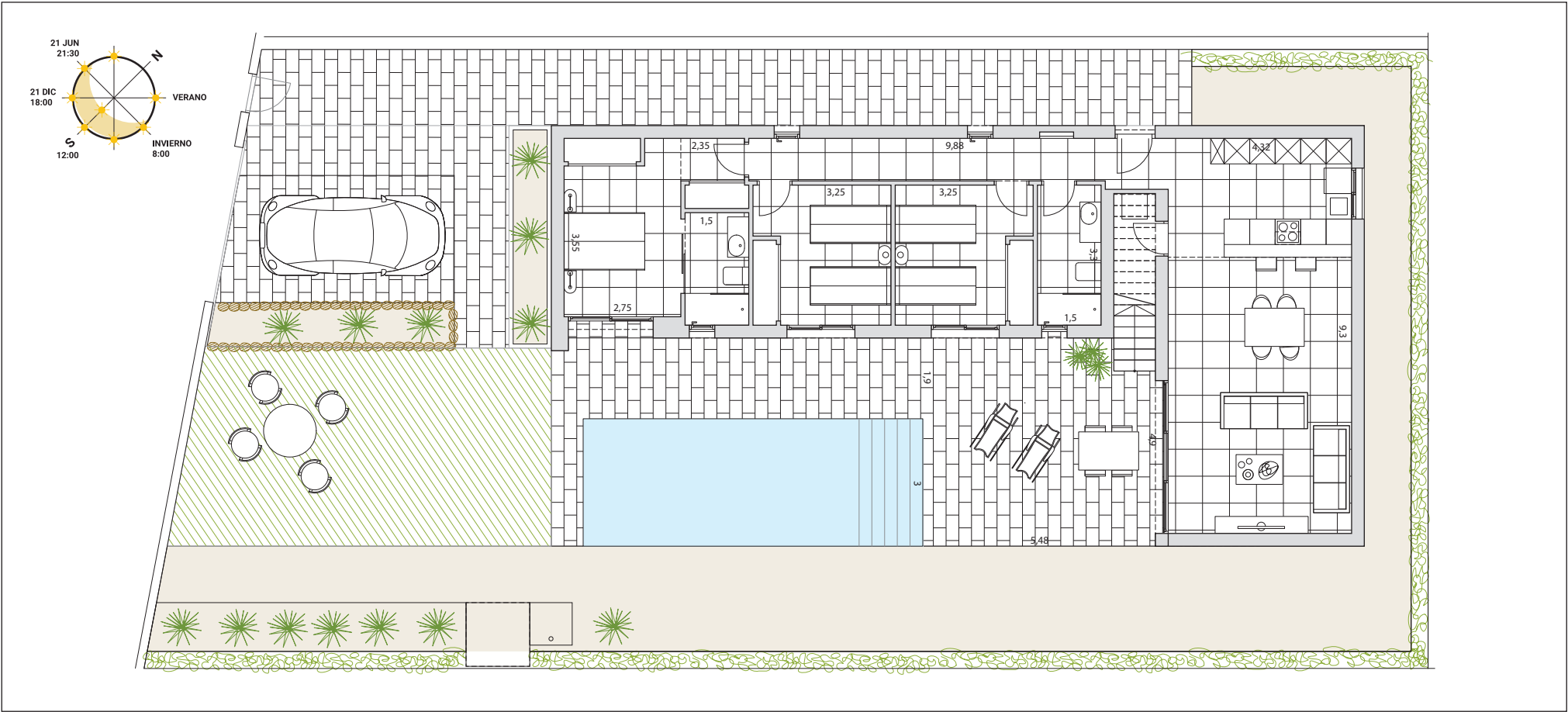
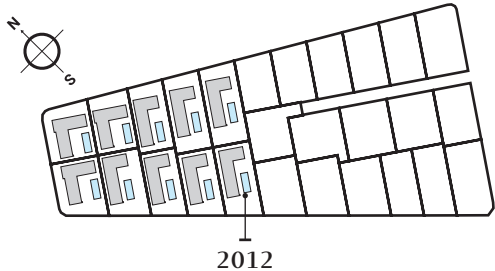
Liège & Leuven. Phase II

Liège (2012) 3 2

Build 119,00 Solarium 61,00 Pool 8x3

All measures are expressed in M2.

SKC	40,19	Bathroom 2	5,00
Bedroom 1	14,80	Corridor	4,20
Bedroom 2	10,70	Storage	2,00
Bedroom 3	10,70	Hall	3,70
Bathroom 1	4,20	Terrace	46,00



BUILDING
YOUR TIME

Legal Notice: Standard floor plan, which does not include the common use areas. Each residence has its own floor plan, which may vary slightly from the standard one. The furniture and household items that appear in the plan are merely for decorative purposes. This is not a contractual document. This plan can be modified by the Project Management Team according to construction or design needs.

PATRIMI

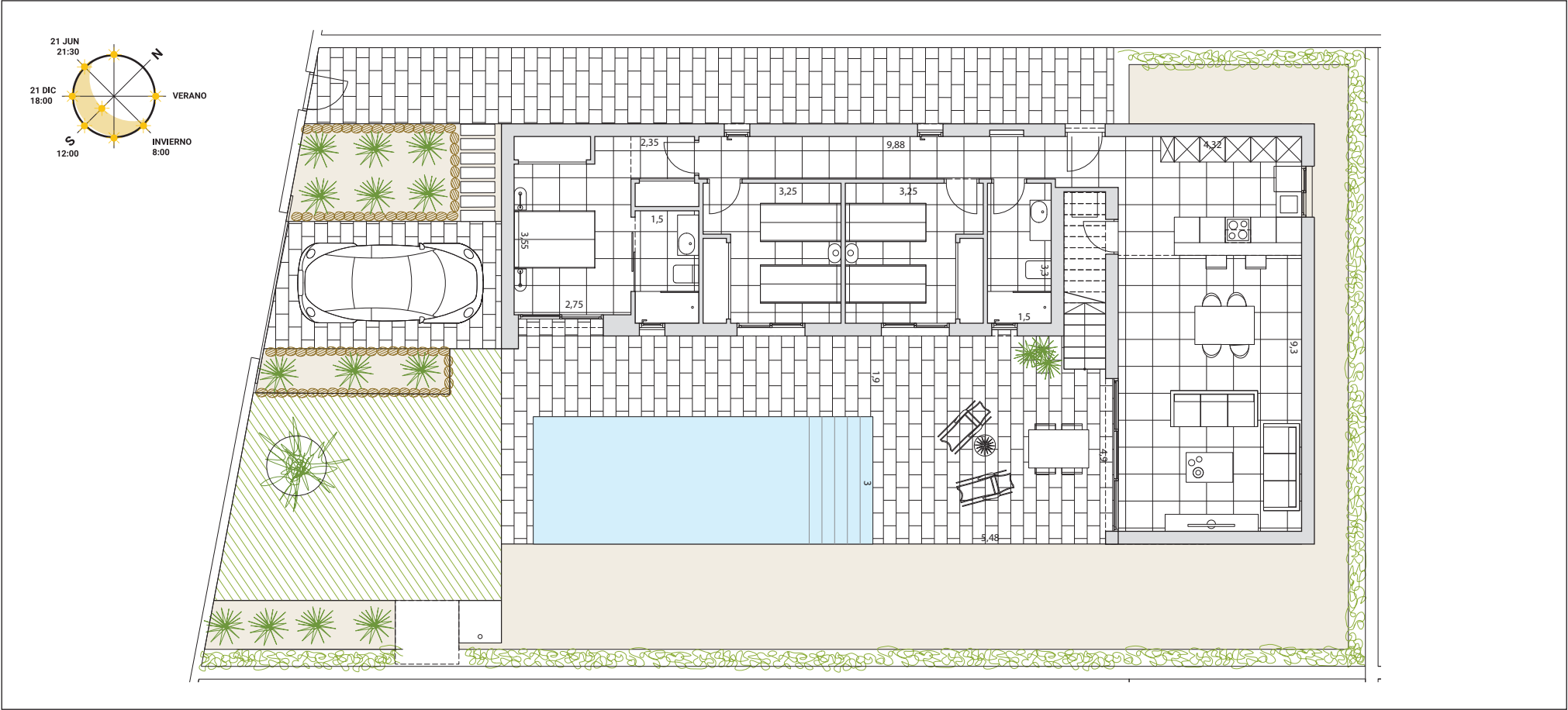
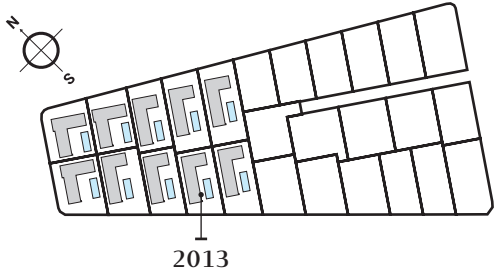
Liège & Leuven. Phase II

Liège (2013) 3 2

Build 119,00 Solarium 61,00 Pool 8x3

All measures are expressed in M2.

SKC	40,19	Bathroom 2	5,00
Bedroom 1	14,80	Corridor	4,20
Bedroom 2	10,70	Storage	2,00
Bedroom 3	10,70	Hall	3,70
Bathroom 1	4,20	Terrace	46,00



BUILDING
YOUR TIME

Legal Notice: Standard floor plan, which does not include the common use areas. Each residence has its own floor plan, which may vary slightly from the standard one. The furniture and household items that appear in the plan are merely for decorative purposes. This is not a contractual document. This plan can be modified by the Project Management Team according to construction or design needs.

PATRIMI

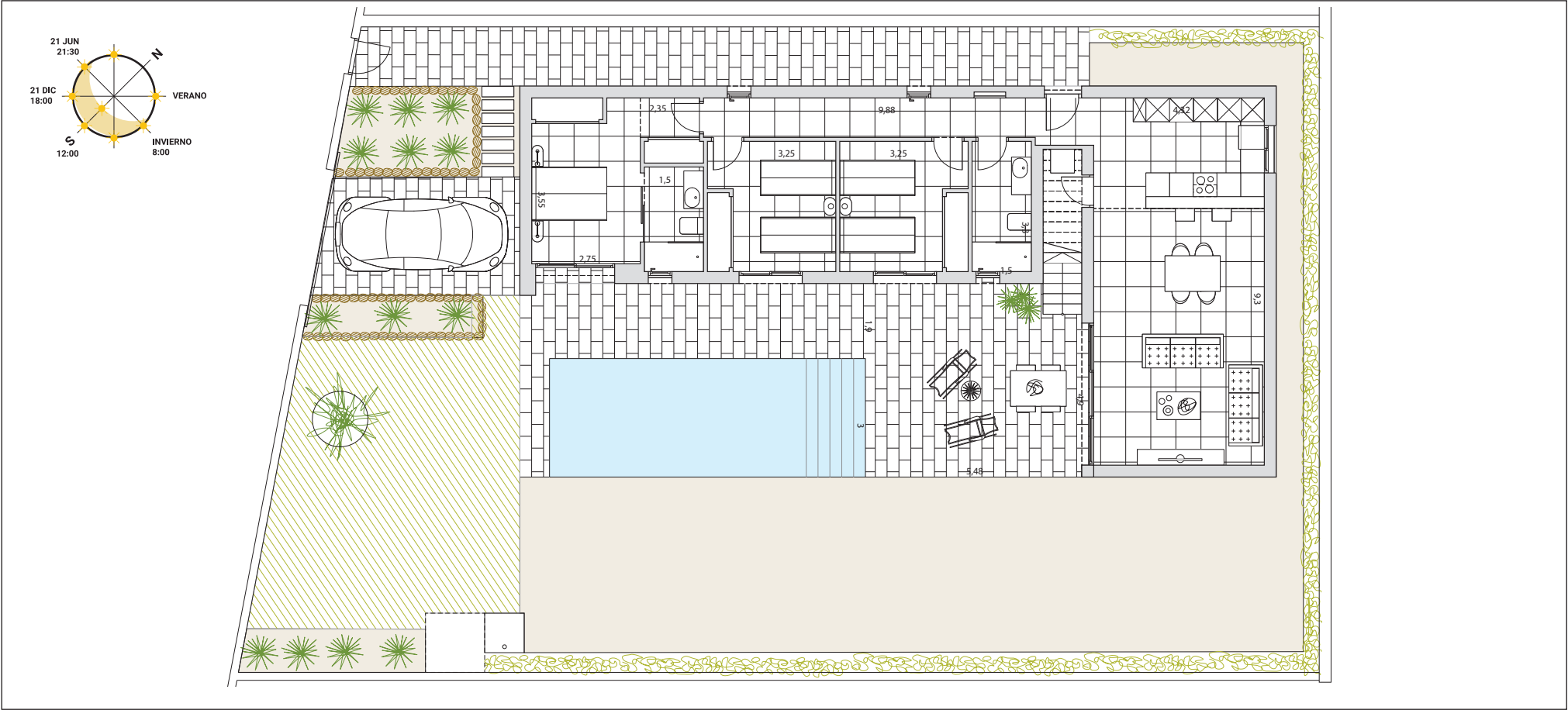
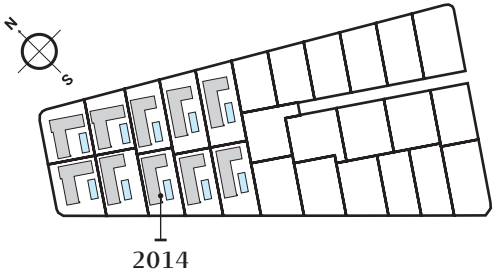
Liège & Leuven. Phase II

Liège (2014) 3 2

Build 119,00 Solarium 61,00 Pool 8x3

All measures are expressed in M2.

SKC	40,19	Bathroom 2	5,00
Bedroom 1	14,80	Corridor	4,20
Bedroom 2	10,70	Storage	2,00
Bedroom 3	10,70	Hall	3,70
Bathroom 1	4,20	Terrace	46,00



BUILDING
YOUR TIME

Legal Notice: Standard floor plan, which does not include the common use areas. Each residence has its own floor plan, which may vary slightly from the standard one. The furniture and household items that appear in the plan are merely for decorative purposes. This is not a contractual document. This plan can be modified by the Project Management Team according to construction or design needs.

PATRIMI

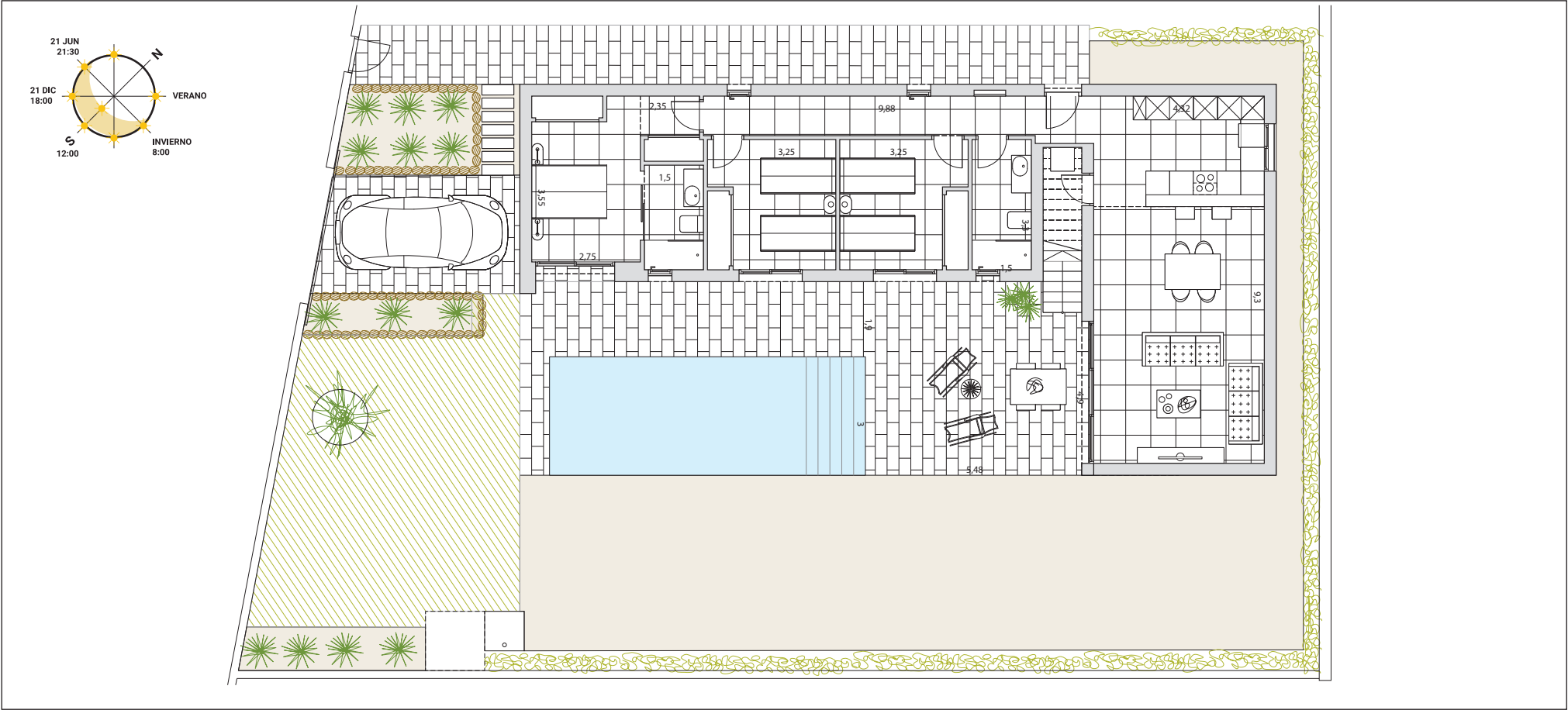
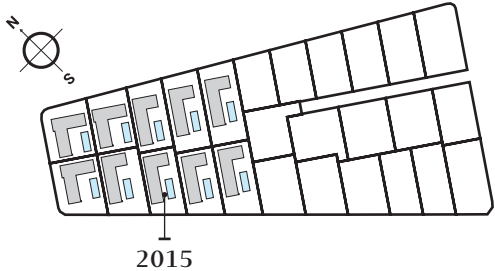
Liège & Leuven. Phase II

Liège (2015) 3 2

Build 119,00 Solarium 61,00 Pool 8x3

All measures are expressed in M2.

SKC	40,19	Bathroom 2	5,00
Bedroom 1	14,80	Corridor	4,20
Bedroom 2	10,70	Storage	2,00
Bedroom 3	10,70	Hall	3,70
Bathroom 1	4,20	Terrace	46,00



BUILDING
YOUR TIME

Legal Notice: Standard floor plan, which does not include the common use areas. Each residence has its own floor plan, which may vary slightly from the standard one. The furniture and household items that appear in the plan are merely for decorative purposes. This is not a contractual document. This plan can be modified by the Project Management Team according to construction or design needs.

PATRIMI

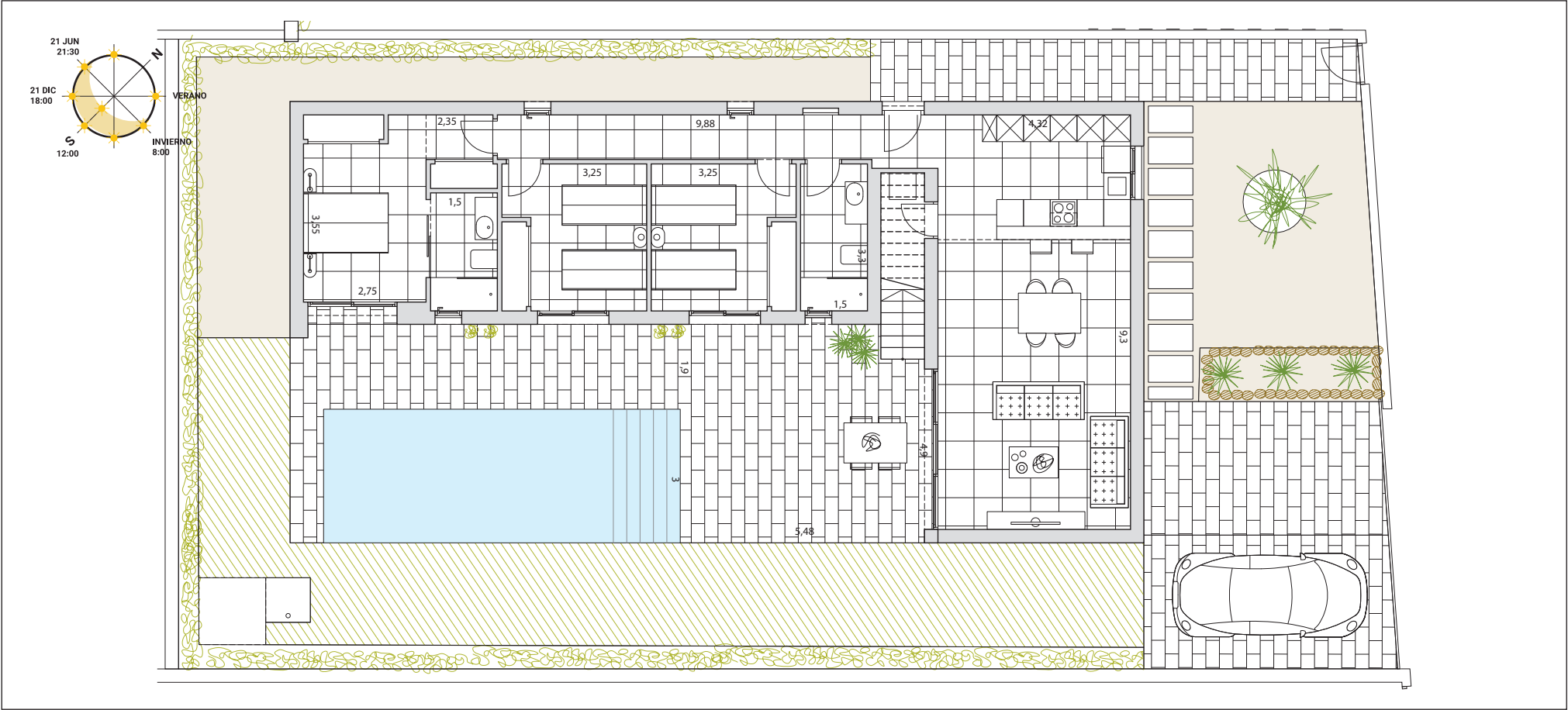
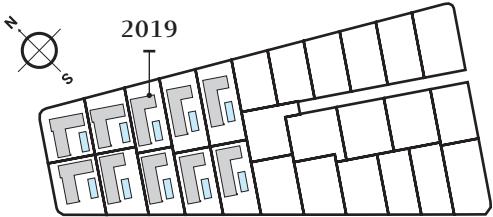
Liège & Leuven. Phase II

Liège (2019) 3 2

Build 119,00 Solarium 61,00 Pool 8x3

All measures are expressed in M2.

SKC	40,19	Bathroom 2	5,00
Bedroom 1	14,80	Corridor	4,20
Bedroom 2	10,70	Storage	2,00
Bedroom 3	10,70	Hall	3,70
Bathroom 1	4,20	Terrace	46,00



BUILDING
YOUR TIME

Legal Notice: Standard floor plan, which does not include the common use areas. Each residence has its own floor plan, which may vary slightly from the standard one. The furniture and household items that appear in the plan are merely for decorative purposes. This is not a contractual document. This plan can be modified by the Project Management Team according to construction or design needs.

PATRIMI

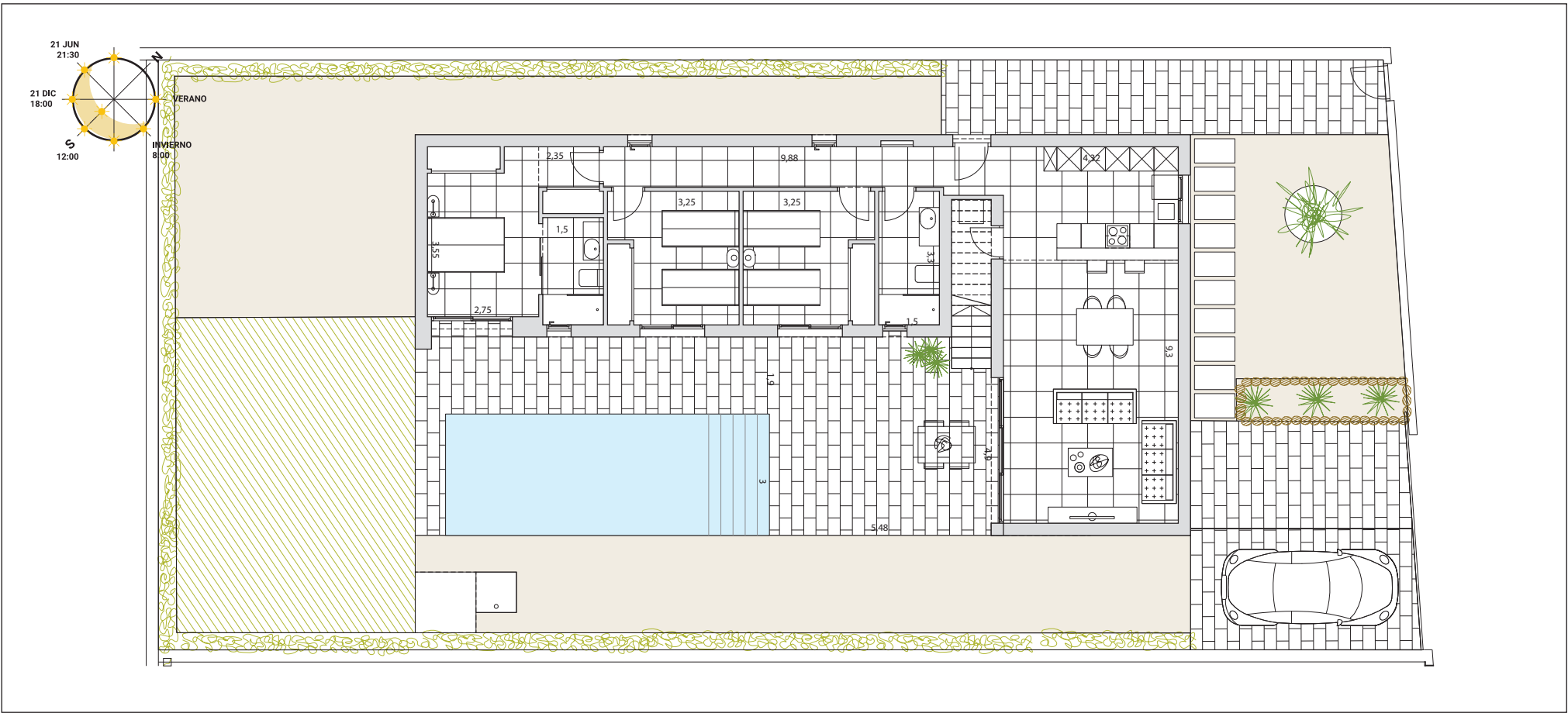
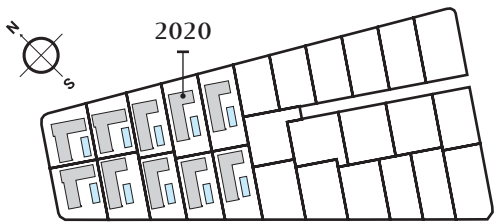
Liège & Leuven. Phase II

Liège (2020) 3 2

Build 119,00 Solarium 61,00 Pool 8x3

All measures are expressed in M2.

SKC	40,19	Bathroom 2	5,00
Bedroom 1	14,80	Corridor	4,20
Bedroom 2	10,70	Storage	2,00
Bedroom 3	10,70	Hall	3,70
Bathroom 1	4,20	Terrace	46,00



BUILDING
YOUR TIME

Legal Notice: Standard floor plan, which does not include the common use areas. Each residence has its own floor plan, which may vary slightly from the standard one. The furniture and household items that appear in the plan are merely for decorative purposes. This is not a contractual document. This plan can be modified by the Project Management Team according to construction or design needs.

PATRIMI

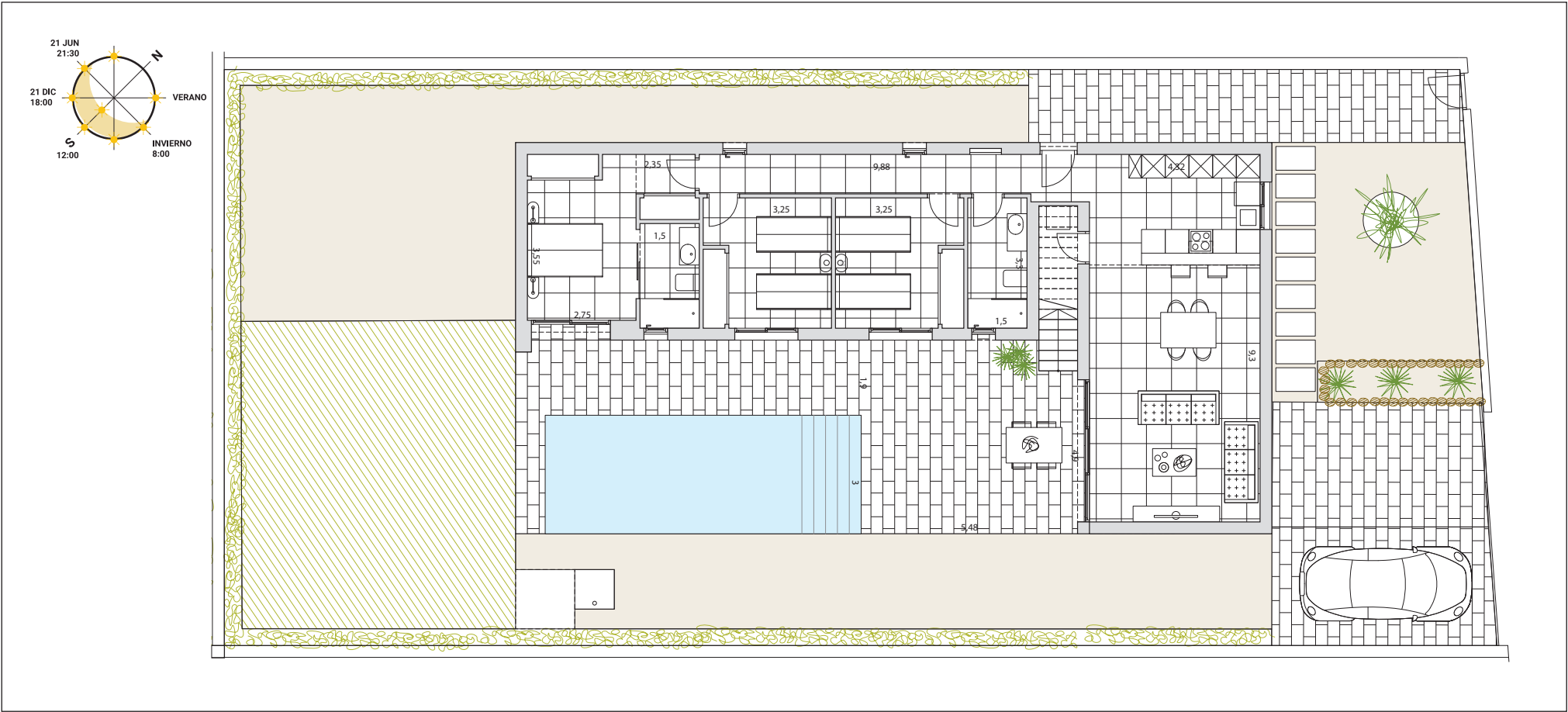
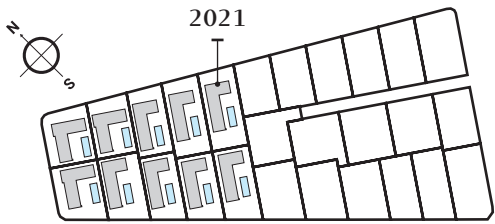
Liège & Leuven. Phase II

Liège (2021) 3 2

Build 119,00 Solarium 61,00 Pool 8x3

All measures are expressed in M2.

SKC	40,19	Bathroom 2	5,00
Bedroom 1	14,80	Corridor	4,20
Bedroom 2	10,70	Storage	2,00
Bedroom 3	10,70	Hall	3,70
Bathroom 1	4,20	Terrace	46,00



BUILDING
YOUR TIME

Legal Notice: Standard floor plan, which does not include the common use areas. Each residence has its own floor plan, which may vary slightly from the standard one. The furniture and household items that appear in the plan are merely for decorative purposes. This is not a contractual document. This plan can be modified by the Project Management Team according to construction or design needs.

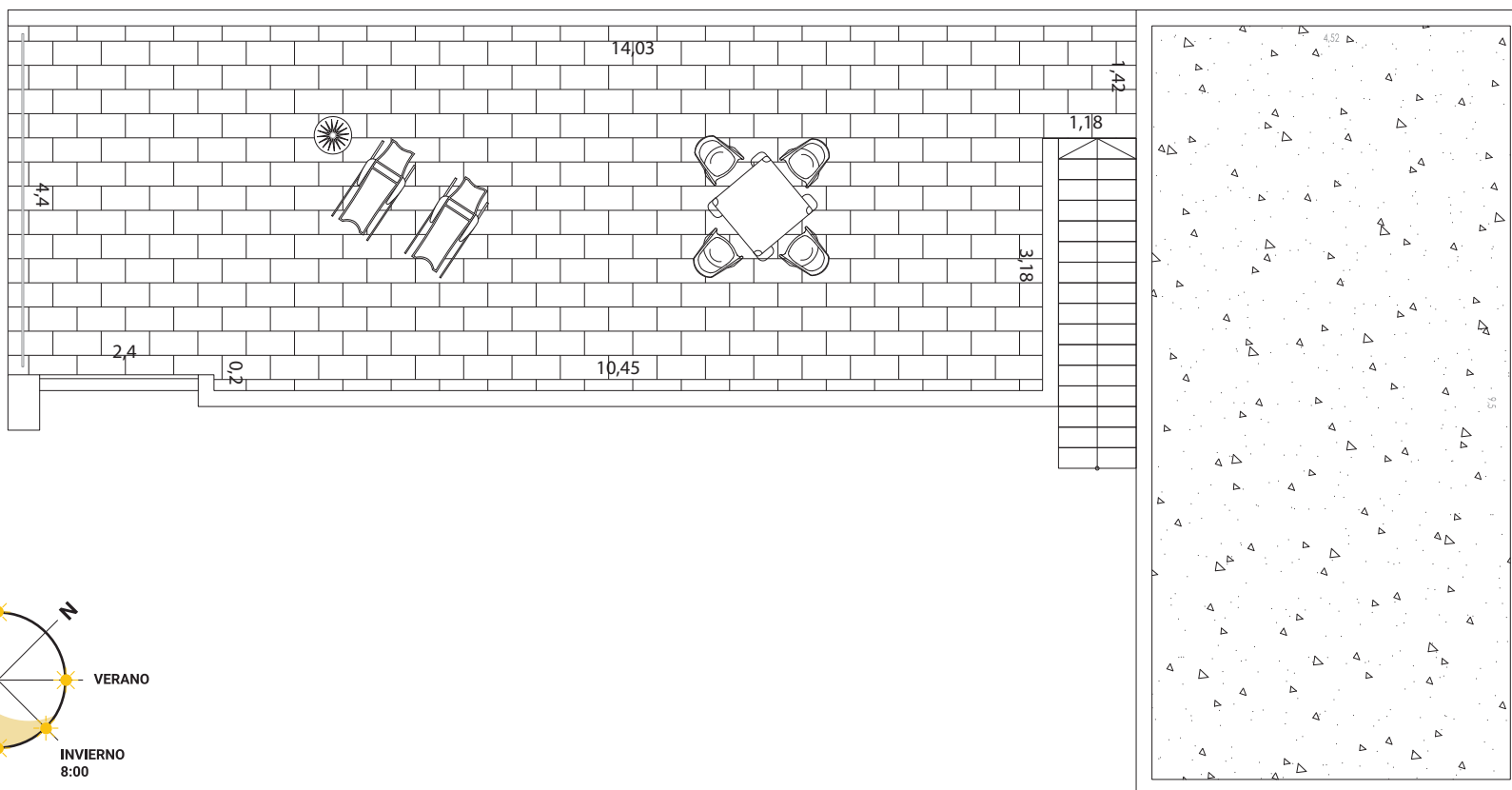
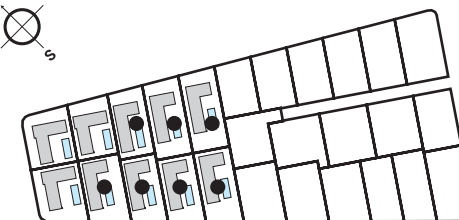
PATRIMI

Liège & Leuven. Phase II

SOLARIUMS

Models Liège (2012, 2013, 2014, 2015, 2019, 2020 & 2021)

All measures are expressed in M2.



**BUILDING
YOUR TIME**

Legal Notice: Standard floor plan, which does not include the common use areas. Each residence has its own floor plan, which may vary slightly from the standard one. The furniture and household items that appear in the plan are merely for decorative purposes. This is not a contractual document. This plan can be modified by the Project Management Team according to construction or design needs.

PATRIMI

VILLAS LEUVEN
(models. 2016-2017-2018)

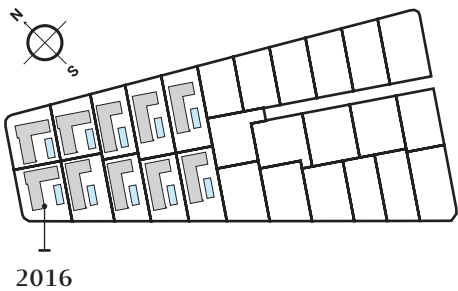
Liège & Leuven. Phase II

Leuven (2016)  3  2

Build 119,00 Solarium 45,00 Pool 8x3

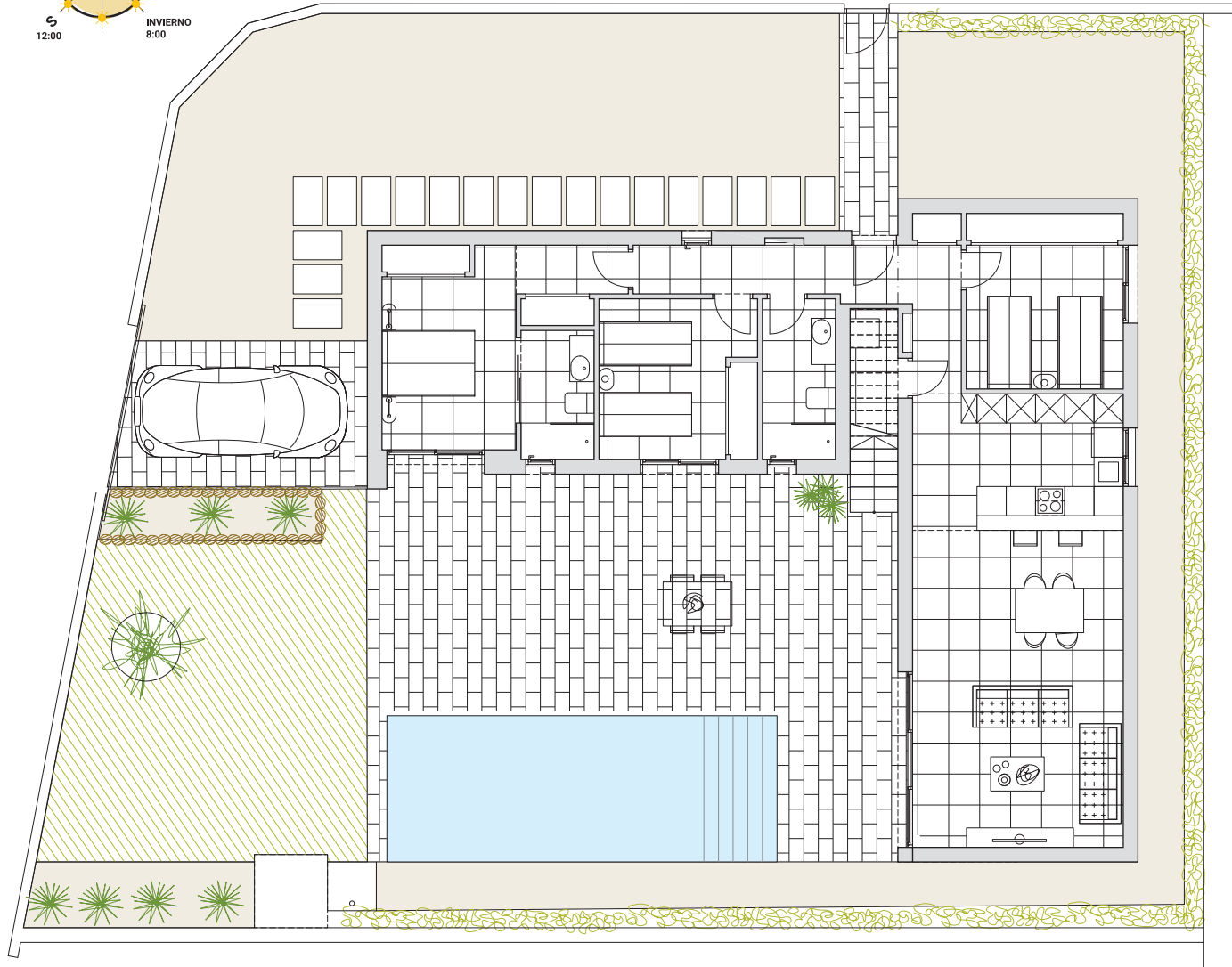
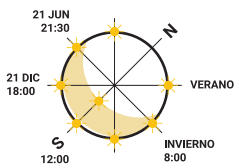
All measures are expressed in M2.

SKC	42,20	Bathroom 2	5,00
Bedroom 1	14,80	Corridor	4,20
Bedroom 2	10,70	Storage	2,00
Bedroom 3	10,70	Hall	3,70
Bathroom 1	4,20	Terrace	65,00





Legal Notice: Standard floor plan, which does not include the common use areas. Each residence has its own floor plan, which may vary slightly from the standard one. The furniture and household items that appear in the plan are merely for decorative purposes. This is not a contractual document. This plan can be modified by the Project Management Team according to construction or design needs.

BUILDING
YOUR TIME



PATRIMI

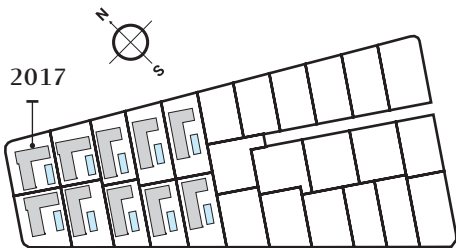
Liège & Leuven. Phase II

Leuven (2017)  3  2

Build 119,00 Solarium 45,00 Pool 8x3

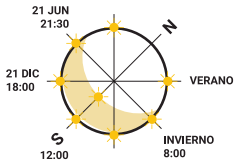
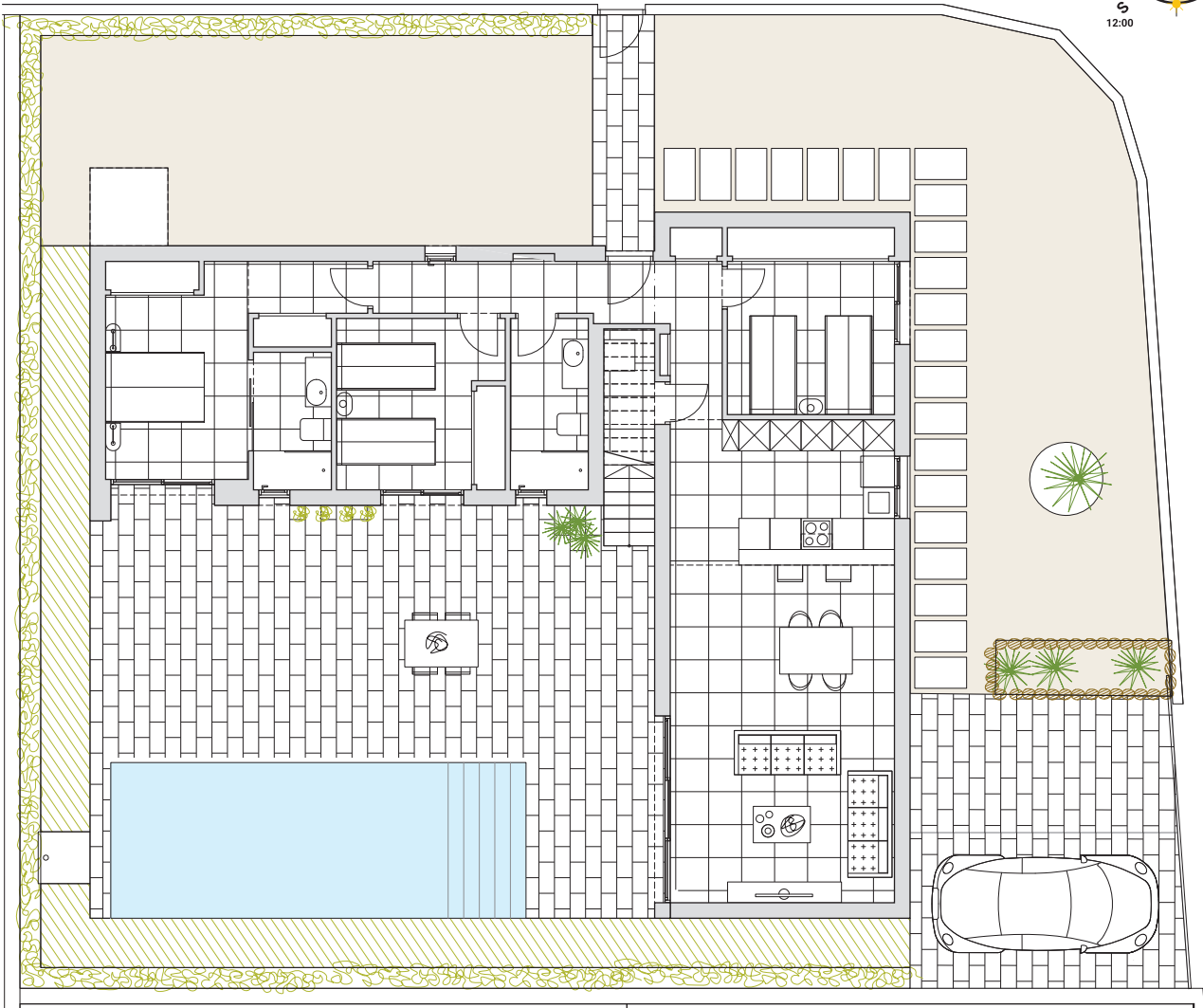
All measures are expressed in M2.

SKC	42,20	Bathroom 2	5,00
Bedroom 1	14,80	Corridor	4,20
Bedroom 2	10,70	Storage	2,00
Bedroom 3	10,70	Hall	3,70
Bathroom 1	4,20	Terrace	65,00





Legal Notice: Standard floor plan, which does not include the common use areas. Each residence has its own floor plan, which may vary slightly from the standard one. The furniture and household items that appear in the plan are merely for decorative purposes. This is not a contractual document. This plan can be modified by the Project Management Team according to construction or design needs.

BUILDING
YOUR TIME



Liège & Leuven. Phase II

Leuven (2018)  3  2

Build 119,00 Solarium 45,00 Pool 8x3

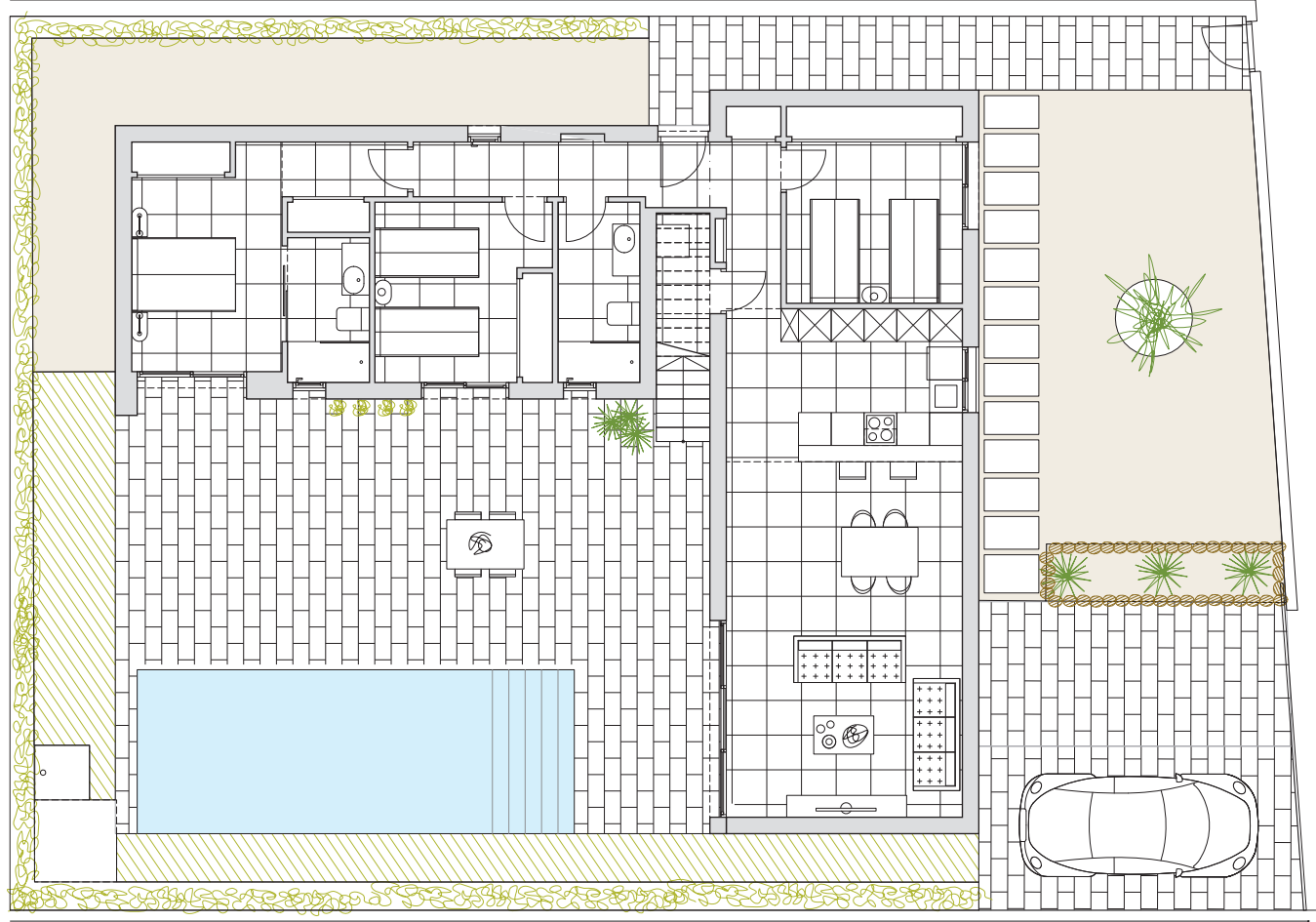
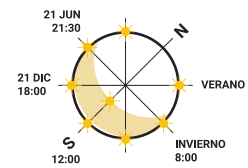
All measures are expressed in M2.

SKC	42,20	Bathroom 2	5,00
Bedroom 1	14,80	Corridor	4,20
Bedroom 2	10,70	Storage	2,00
Bedroom 3	10,70	Hall	3,70
Bathroom 1	4,20	Terrace	65,00



Legal Notice: Standard floor plan, which does not include the common use areas. Each residence has its own floor plan, which may vary slightly from the standard one. The furniture and household items that appear in the plan are merely for decorative purposes. This is not a contractual document. This plan can be modified by the Project Management Team according to construction or design needs.

BUILDING
YOUR TIME



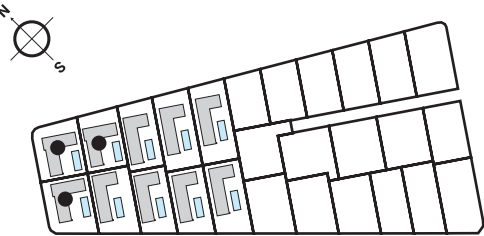
PATRIMI

Liège & Leuven. Phase II

SOLARIUMS Models LEUVEN (2016-2017-2018)

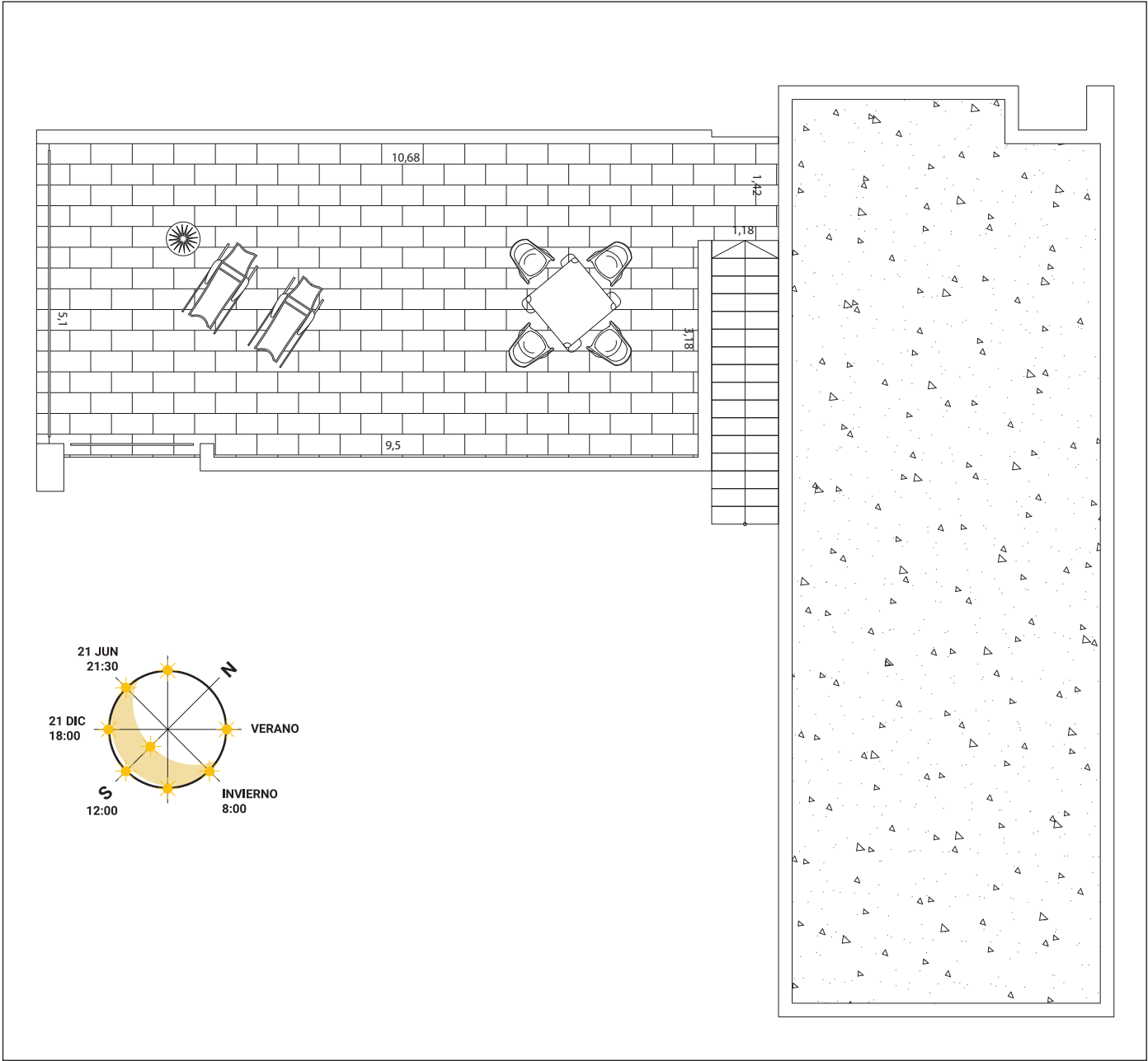
Build	119,00	Solarium	45,00	Pool	8x3
-------	--------	----------	-------	------	-----

All measures are expressed in M2.



Legal Notice: Standard floor plan, which does not include the common use areas. Each residence has its own floor plan, which may vary slightly from the standard one. The furniture and household items that appear in the plan are merely for decorative purposes. This is not a contractual document. This plan can be modified by the Project Management Team according to construction or design needs.

BUILDING
YOUR TIME



PATRIMI



Qualities

Interior Flooring

23 x 120 cm porcelain-stoneware imitation wood Oxford Blanco.

Solarium, stairs and exterior Flooring

23 x 120 cm porcelain-stoneware imitation wood Oxford Blanco Anti-slip C3.

Finish Paint

Smooth White flat

Doors

Main Entrance armored door fitted , exterior grey exterior and white interior.
White lacquered interior doors with stainless Steel handlers.
Built in wardrobes with sliding doors and drawers included.

Windows and sliding doors

Dark grey aluminum carpentry, tilt and turn system in bathrooms. Includes also electric blinds of the same material and color in all rooms, except in secondary bathroom. All blinds are connected to the domotic system.

Installations and illumination

Valena Next from Legrand electric fittings.
Alarm system installed (touch screen, one sensor each room, interior and exterior camera).
Ducted air conditioning system pre-installed.
Hot water system powered by aerothermia.
Exterior lights included.
Remote access private parking.
Domotic system: shutters control, alarm, lighting control (living-room and kitchen).

Kitchen

White low cabinets & ash tree wood columns.
Integrated extractor hood model Cielo MEPAMSA.
White ultracompact worktop.
Built in, one and a half sink.
Kitchen tap model Kala from GRB.

Bathrooms

Rectified 30 x 60 white tiles.
Shower pavement Oxford Blanco.
Nilo from Bathco Sink.
Mirror and built in double led spotlights.
Hatria from Le Fiabe toilet with Skate Cosmopolitan push button.
High pipe Kala Sink tap.
Built in Kala Shower kit.
Shower screen included.

Bathroom in suite:
Anthracite grey tiles series and dark grey bathroom unit.

General bathroom:
Shower tiles and bathroom unit imitation wood.

**BUILDING
YOUR TIME**

www.patrimi.com

PATRIMI

BUILDING YOUR TIME

Villas Liège & Leuven. Phase II

Detached villas at La Finca Golf

See more:

Villas Finestrat.
Villa Dinant.
Salinas Bungalows.
Lagos Bungalows.
Apartments Loira III.
Apartments Soleil.

www.patrimi.com
info@patrimi.com