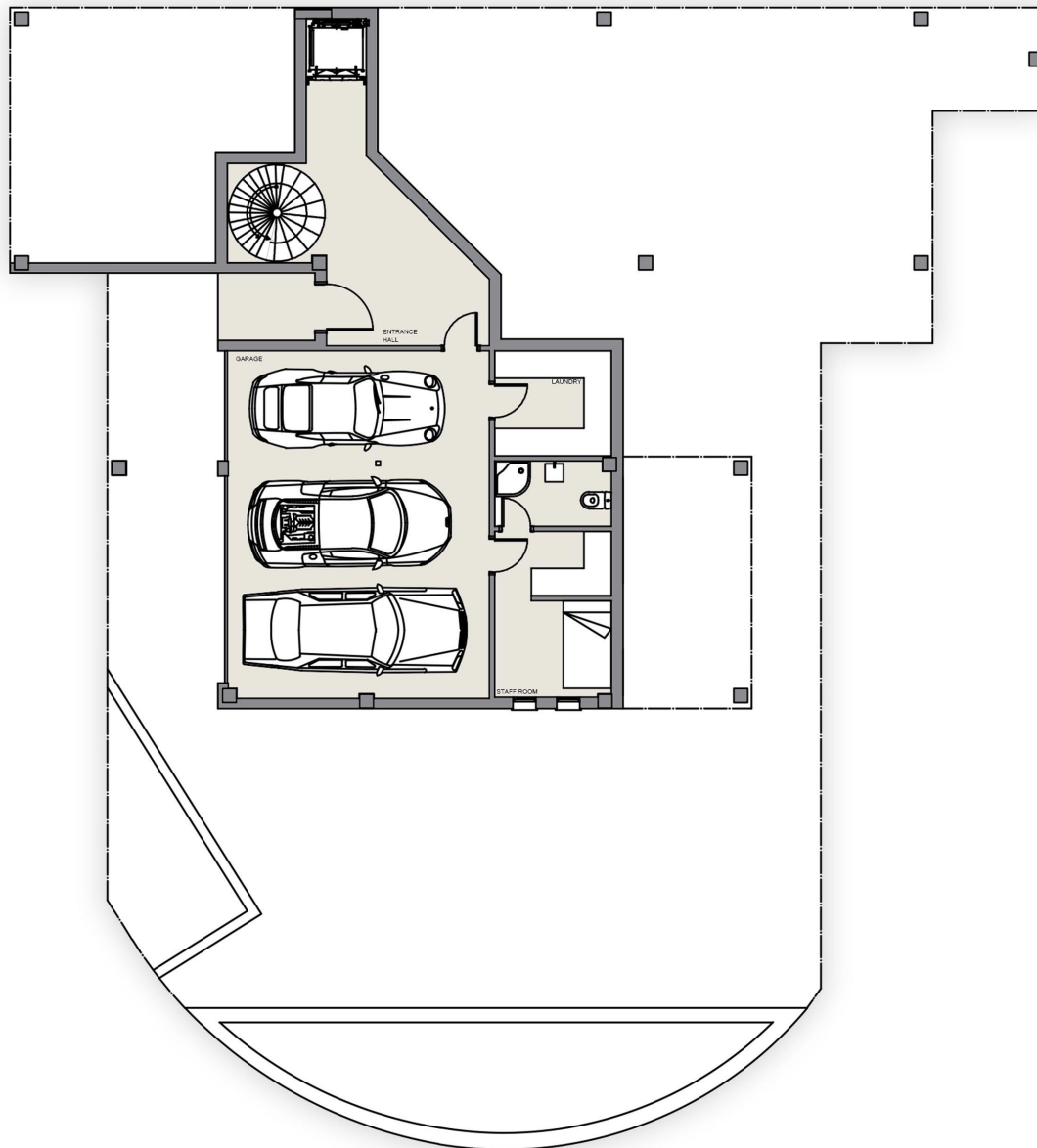


Entrance floor.

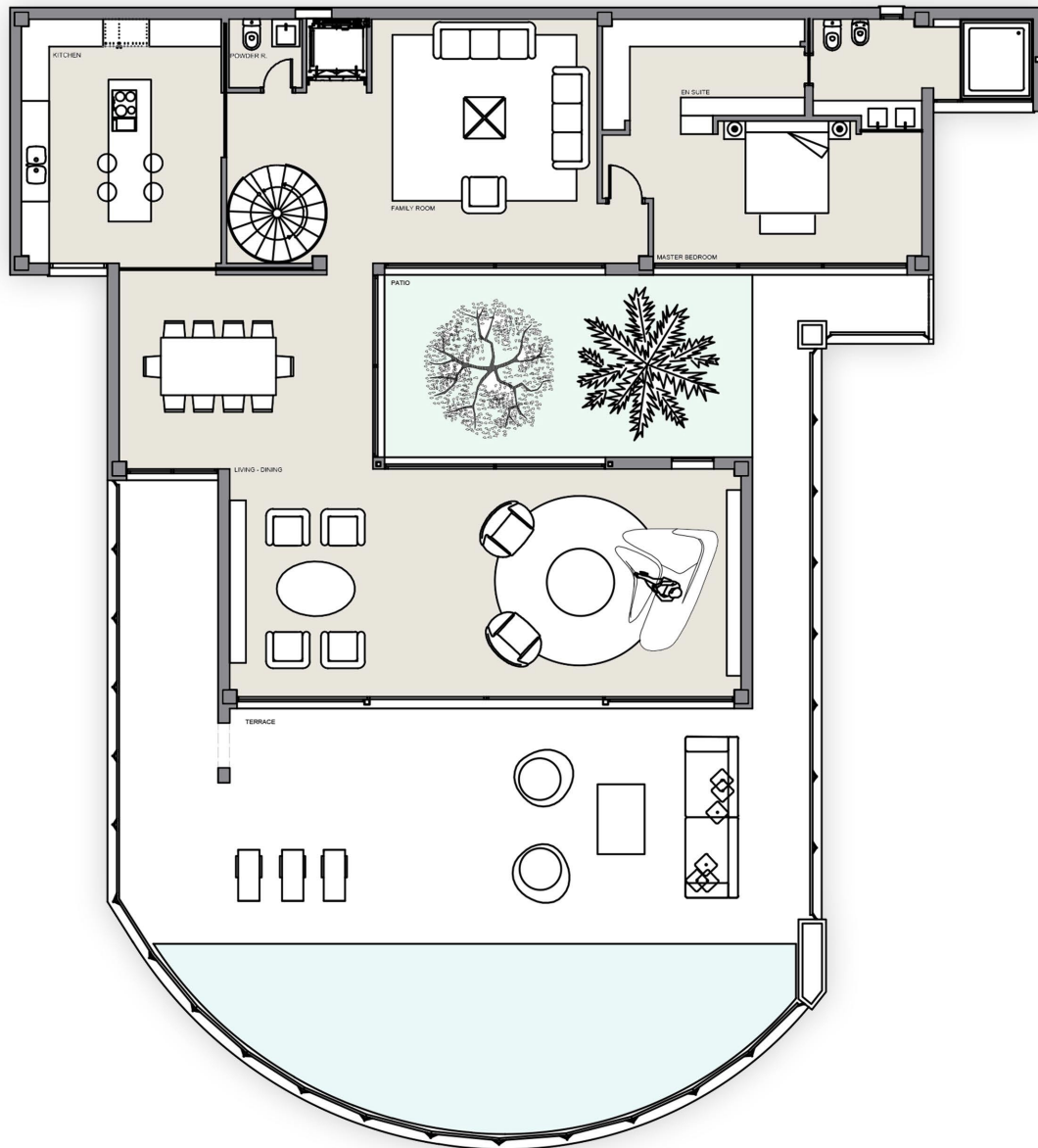
Entrance hall, staff bedroom and parking.



Heatable	area 98m ²
Total	area 98m ²

First floor.

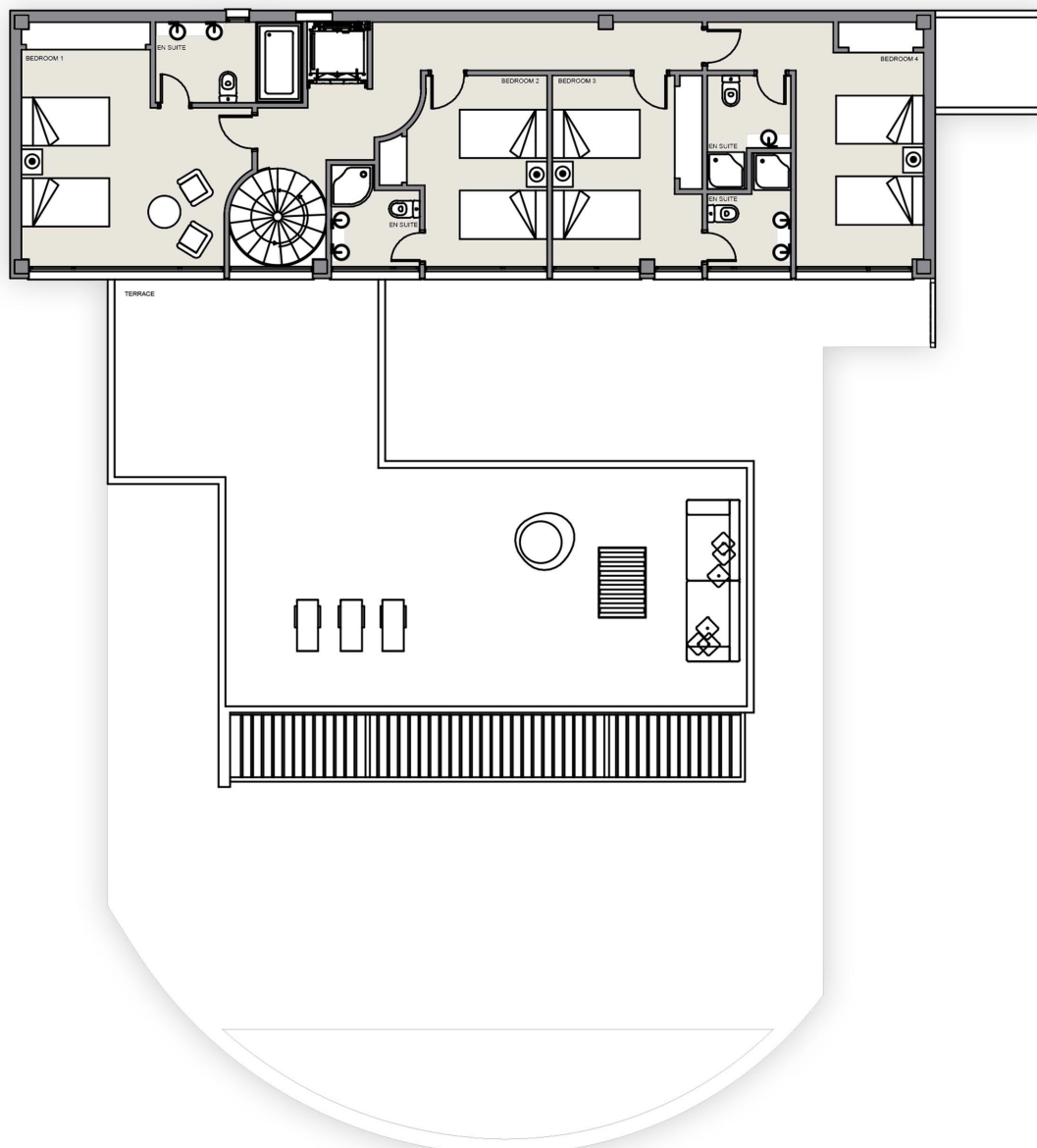
Living, dining, kitchen, master bedroom, family room and terrace.



Heatable	area 210m ²
Terrace	area 190m ²
Total	area 400m ²

Second floor.

4 bedrooms en suite, double height lobby.



Heatable	area 116m ²
Terrace	area 88m ²
Total	area 204m ²