

edificio  
**Excellence**

BENALMÁDENA

**Dossier**







## NEW CONSTRUCTION APARTMENTS IN ARROYO DE LA MIEL BENALMADENA

Exclusive building with 30 apartments, 12 storage rooms, 60 parking spaces and a swimming pool built with efficiency, sustainability and excellent quality.

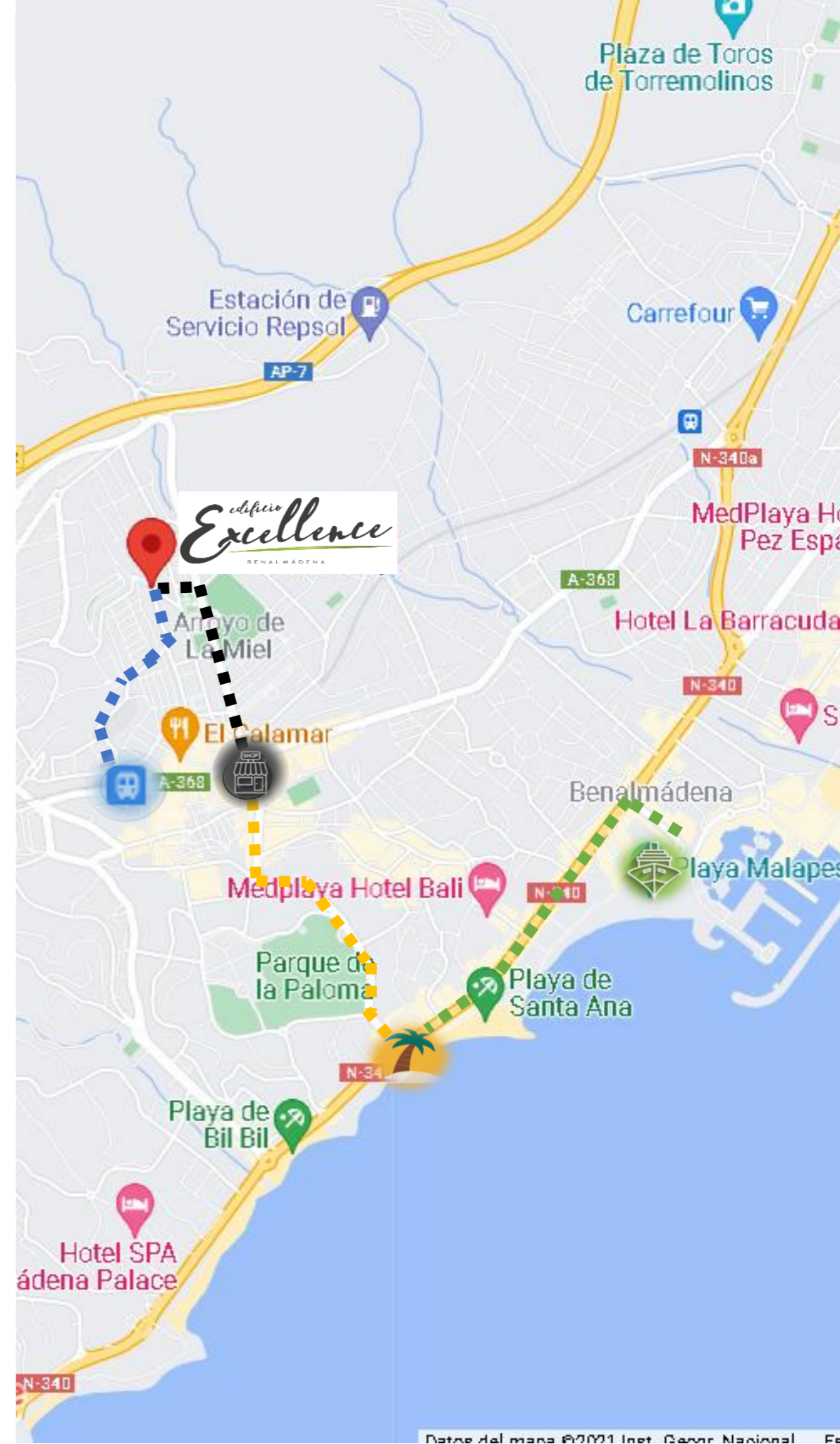


Located in Arroyo de la Miel.

-  8 min. walking from Arroyo de la Miel center.
-  10 min. walking from the Train Station.
-  5 min. drive to the beach.
-  2 km. to Puerto Marina.

One step away:

You will have schools, transportation, medical centers, pharmacies, supermarkets, cafes, and sports center.





[GO TO MAP](#)

**C/ Valdepeñas, 12**

High and middle school



Puerto Marina



Paseo Marítimo



Medical Center

A7 Highway



Nuevo Mercadona



Sports Center



Mercadona



Carrefour  
Carrefour



Train Station



Services  
5 min. walking



Beach  
5 min. drive



Golf  
10 min. drive



Airport  
15 min. drive

## ELIGE DE LO NUEVO, LO MEJOR



30 apartments  
2 and 3 bedrooms.



2 and 3 bedroom apartmer  
with terraces



3 bedrooms  
penthouses with  
seaview



2 and 3  
bedrooms  
ground floor  
apartments



Swimming  
Pool



Underground  
Parking

## ENJOY A NEW LEVEL OF QUALITY OF LIFE...

**WE APLY A CONSTRUTION MODEL THAT REDUCE CO2 EMISSIONS AND SAVES MORE THAN 30% IN YOUR ELECTRICITY BILL**



High quality and sustainable materials



Air conditioning and hot water by Aerothermal



Modern design and LED lighting.



The building consists of **30 homes** with **2 and 3 bedrooms**.  
1 rooftop solarium with pool, dressing rooms and showers.

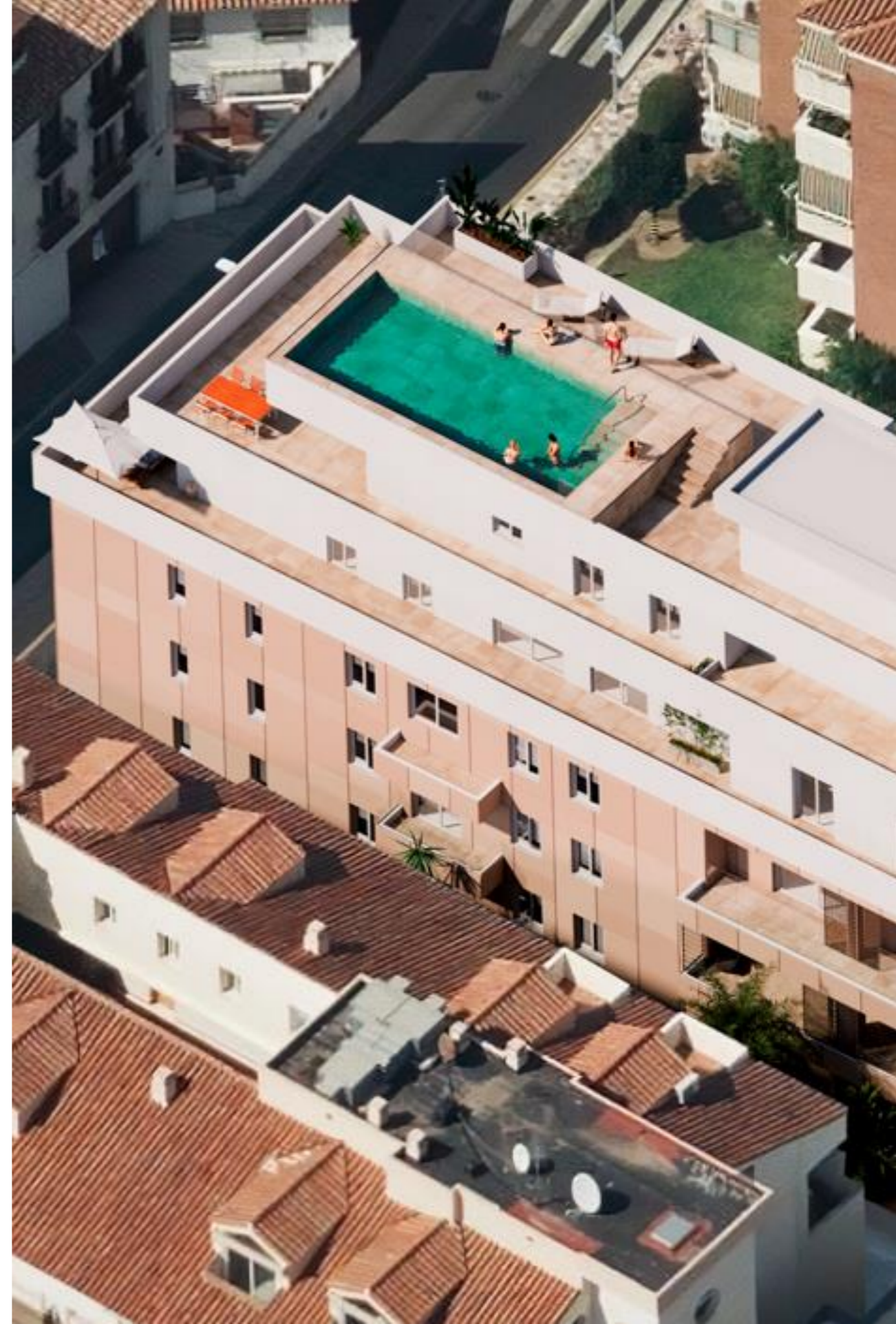
### **APARTMENTS TYPOLOGY:**

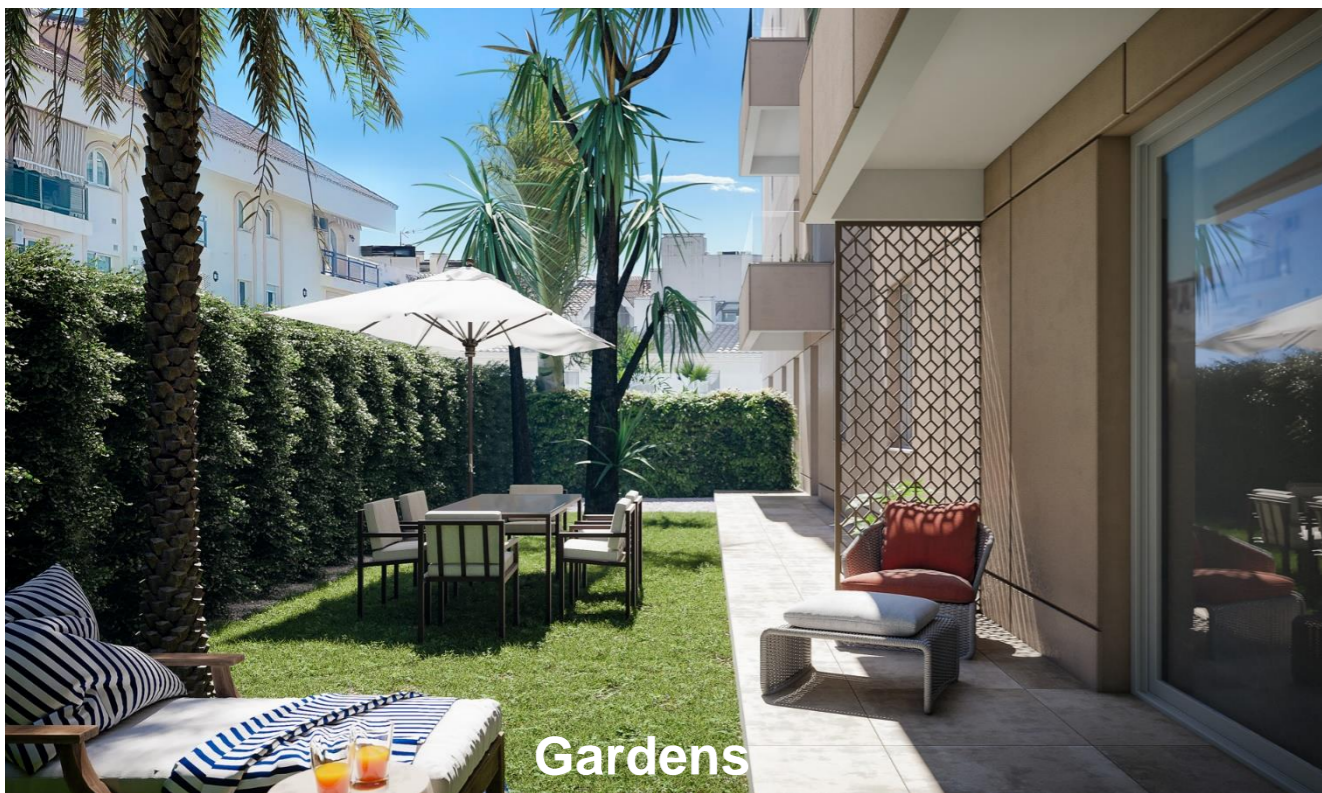
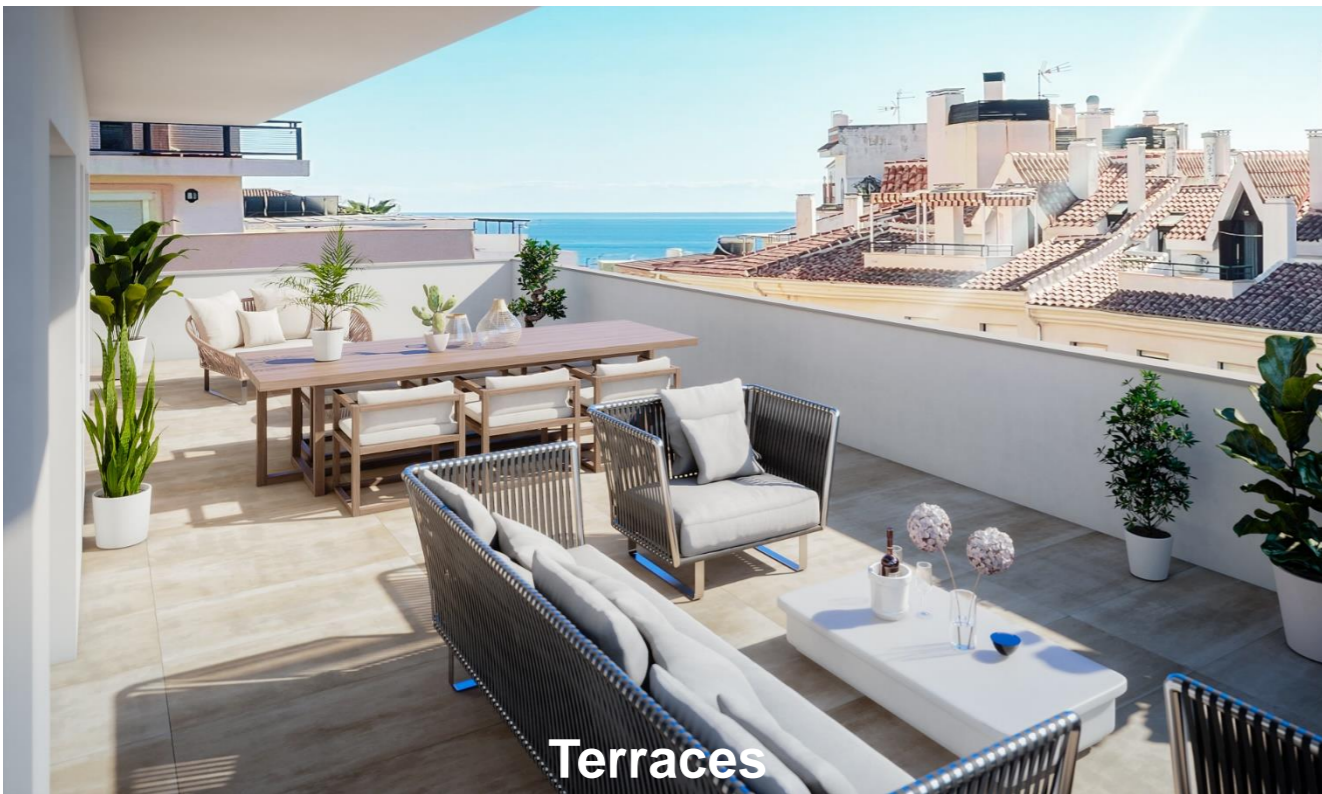
- Ground floor of 2 bedrooms and 2 bathrooms with large gardens
- Apartments of 2 bedrooms and 2 bathrooms with terraces
- Apartments of 3 bedrooms and 2 bathrooms with terraces
- Penthouses of 3 bedrooms and 2 bathrooms with terraces

It also has **60 parking spaces** and **12 storage rooms**, spread over 2 basement floors.

**APPROXIMATE DELIVERY 2<sup>nd</sup> SEMESTER OF 2023**

**[GO TO OUR VIRTUAL TOUR](#)**





**Ground floor of 2 bedrooms and 2 bathrooms with private gardens**



**Cuadro de Superficies**

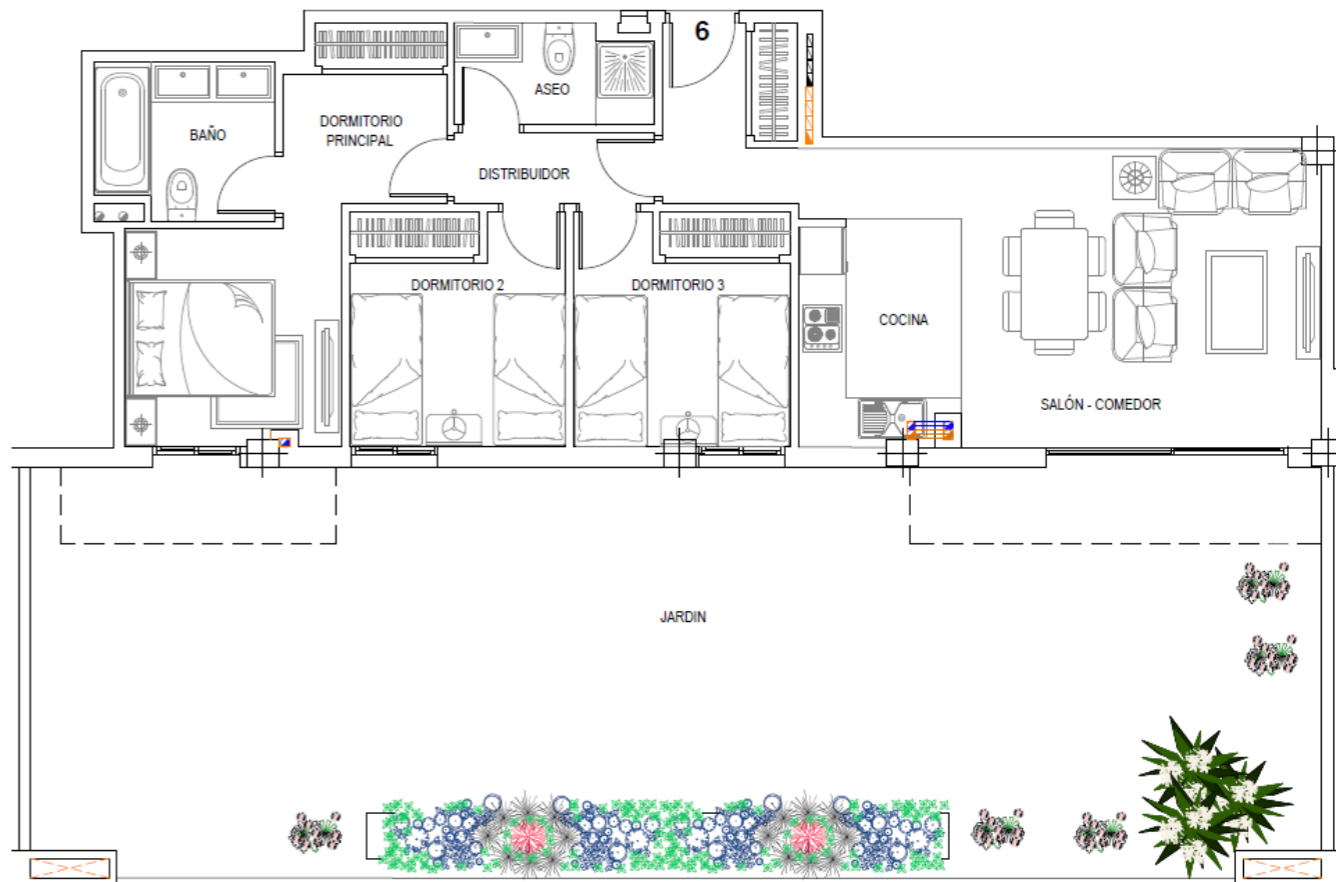
- COCINA	6,40 m <sup>2</sup>
- DISTRIBUIDOR	2,10 m <sup>2</sup>
- SALÓN COMEDOR	17,46 m <sup>2</sup>
- DORMITORIO PRINCIPAL	15,00 m <sup>2</sup>
- BAÑO 1	5,65 m <sup>2</sup>
- DORMITORIO	8,85 m <sup>2</sup>
- ASEO	3,55 m <sup>2</sup>
<b>SUPERFICIE ÚTIL DE VIVIENDA</b>	<b>59,00 m<sup>2</sup></b>
<b>SUPERFICIE ÚTIL JARDIN</b>	<b>62,80 m<sup>2</sup></b>
<b>SUPERFICIE CONSTRUIDA</b>	<b>66,95 m<sup>2</sup></b>
<b>REPARTO ZONA COMUN</b>	<b>5,92 m<sup>2</sup></b>
<b>SUPERFICIE CONSTRUIDA P.P.Z.C.</b>	<b>72,87m<sup>2</sup></b>



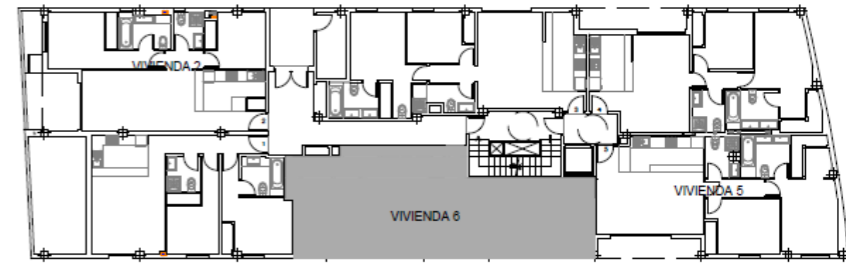
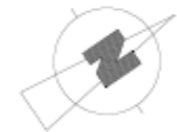
**Cocina Totalmente Amueblada y Equipada**



**Ground floor of 3 bedrooms and 2 bathrooms with private garden**

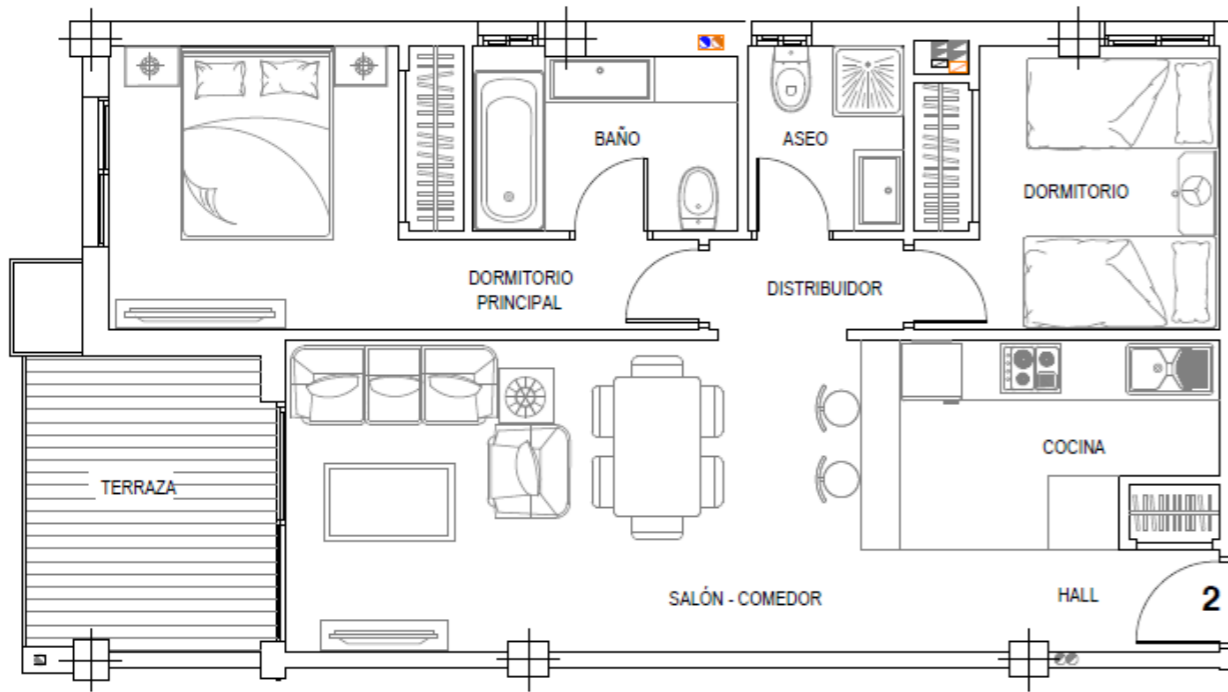


Cuadro de Superficies	
- COCINA	5,85 m <sup>2</sup>
- DISTRIBUIDOR	2,30 m <sup>2</sup>
- SALÓN COMEDOR	23,00 m <sup>2</sup>
- DORMITORIO PRINCIPAL	12,20 m <sup>2</sup>
- BAÑO 1	4,40 m <sup>2</sup>
- DORMITORIO 2	8,15 m <sup>2</sup>
- DORMITORIO 3	8,15 m <sup>2</sup>
- ASEO	3,20 m <sup>2</sup>
SUPERFICIE ÚTIL DE VIVIENDA	67,25 m <sup>2</sup>
SUPERFICIE ÚTIL JARDIN	85,70 m <sup>2</sup>
SUPERFICIE CONSTRUIDA	72,25 m <sup>2</sup>
REPARTO ZONA COMUN	6,66 m <sup>2</sup>
SUPERFICIE CONSTRUIDA P.P.Z.C.	81,91 m <sup>2</sup>



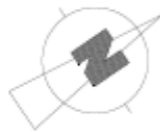


Apartments of 2 bedrooms and 2 bathrooms with terraces



Cuadro de Superficies

- HALL	4,05 m <sup>2</sup>
- COCINA	6,75 m <sup>2</sup>
- DISTRIBUIDOR	1,75 m <sup>2</sup>
- SALÓN COMEDOR	17,80 m <sup>2</sup>
- DORMITORIO PRINCIPAL	12,40 m <sup>2</sup>
- BAÑO 1	4,70 m <sup>2</sup>
- DORMITORIO	8,30 m <sup>2</sup>
- ASEO	2,90 m <sup>2</sup>
<b>SUPERFICIE ÚTIL DE VIVIENDA</b>	<b>58,65 m<sup>2</sup></b>
<b>SUPERFICIE ÚTIL TERRAZA</b>	<b>7,30 m<sup>2</sup></b>
<b>SUPERFICIE CONSTRUIDA</b>	<b>66,65 m<sup>2</sup></b>
<b>REPARTO ZONA COMUN</b>	<b>5,90 m<sup>2</sup></b>
<b>SUPERFICIE CONSTRUIDA P.P.Z.C.</b>	<b>72,60m<sup>2</sup></b>



Salón Comedor



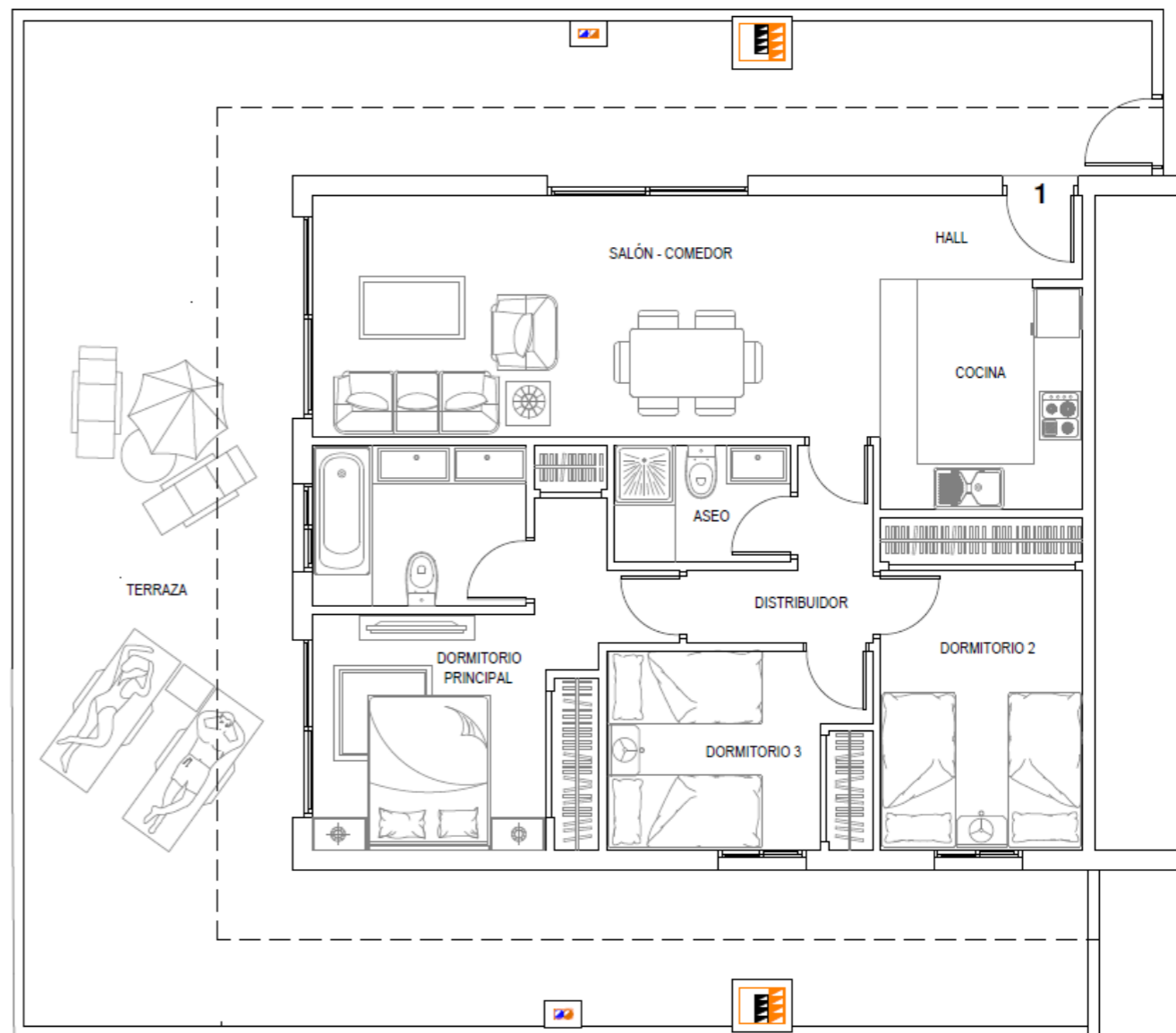
Dormitorio Principal



Dormitorio Principal



## Apartments of 3 bedrooms and 2 bathrooms with terraces

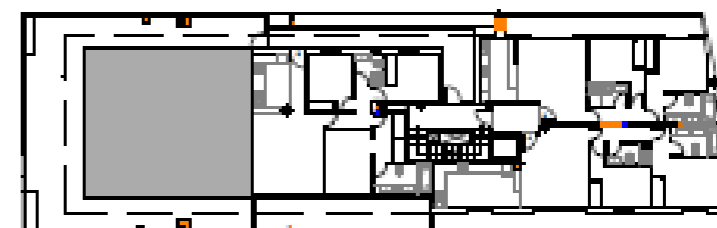
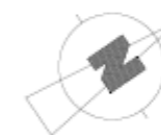


### Cuadro de Superficies

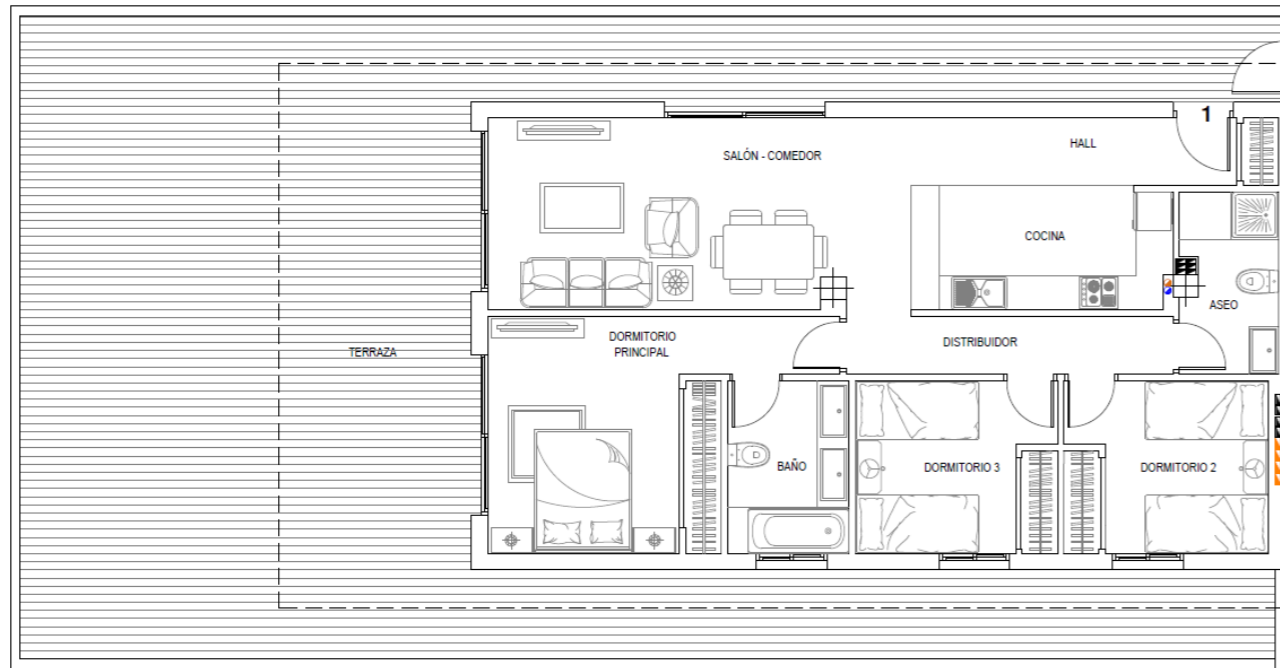
- HALL	2,80 m <sup>2</sup>
- COCINA	7,05 m <sup>2</sup>
- DISTRIBUIDOR	3,50 m <sup>2</sup>
- SALÓN COMEDOR	21,15 m <sup>2</sup>
- DORMITORIO PRINCIPAL	13,30 m <sup>2</sup>
- BAÑO 1	5,30 m <sup>2</sup>
- DORMITORIO 2	10,30 m <sup>2</sup>
- DORMITORIO 3	8,10 m <sup>2</sup>
- ASEO	3,15 m <sup>2</sup>

SUPERFICIE ÚTIL DE VIVIENDA	74,45 m <sup>2</sup>
SUPERFICIE ÚTIL TERRAZA	81,20 m <sup>2</sup>

SUPERFICIE CONSTRUIDA	84,25 m <sup>2</sup>
REPARTO ZONA COMUN	7,48 m <sup>2</sup>
SUPERFICIE CONSTRUIDA P.P.Z.C.	91,71 m <sup>2</sup>

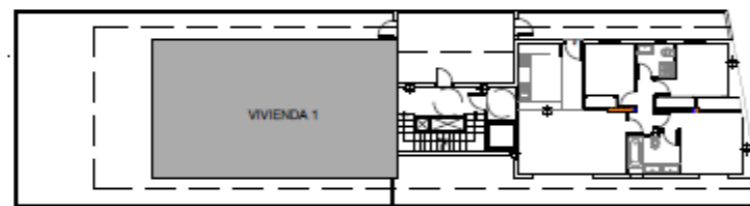
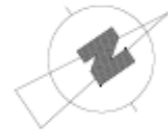


**Penthouse of 3 bedrooms and 2 bathrooms with terrace**



**Cuadro de Superficies**

- HALL	6,05 m <sup>2</sup>
- COCINA	7,90 m <sup>2</sup>
- DISTRIBUIDOR	4,60 m <sup>2</sup>
- SALÓN COMEDOR	19,60 m <sup>2</sup>
- DORMITORIO PRINCIPAL	15,05 m <sup>2</sup>
- BAÑO 1	5,15 m <sup>2</sup>
- DORMITORIO 2	6,55 m <sup>2</sup>
- DORMITORIO 3	8,45 m <sup>2</sup>
- ASEO	4,30 m <sup>2</sup>



SUPERFICIE ÚTIL DE VIVIENDA 79,65 m<sup>2</sup>

SUPERFICIE ÚTIL TERRAZA 107,70 m<sup>2</sup>

SUPERFICIE CONSTRUIDA 90,20 m<sup>2</sup>

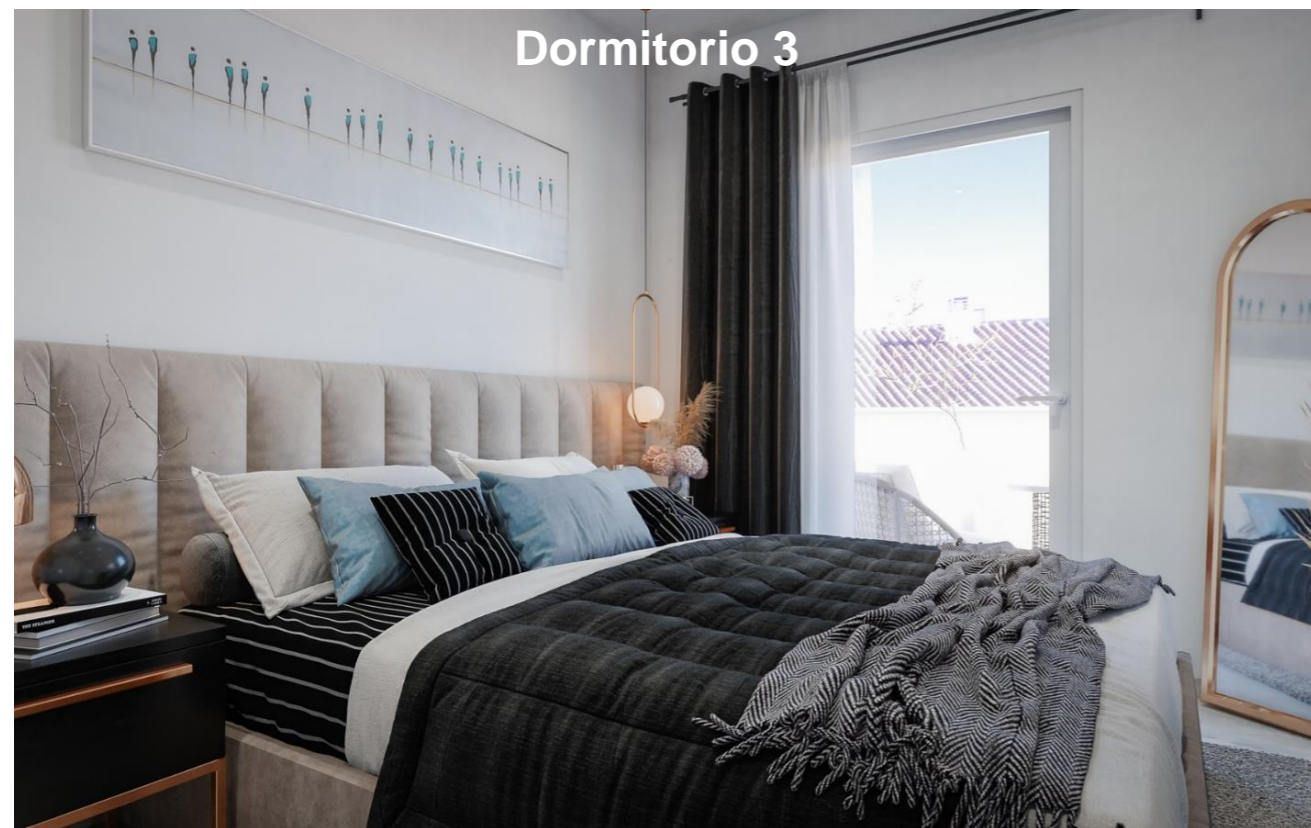
REPARTO ZONA COMUN 7,98 m<sup>2</sup>

SUPERFICIE CONSTRUIDA P.P.Z.C. 98,18 m<sup>2</sup>





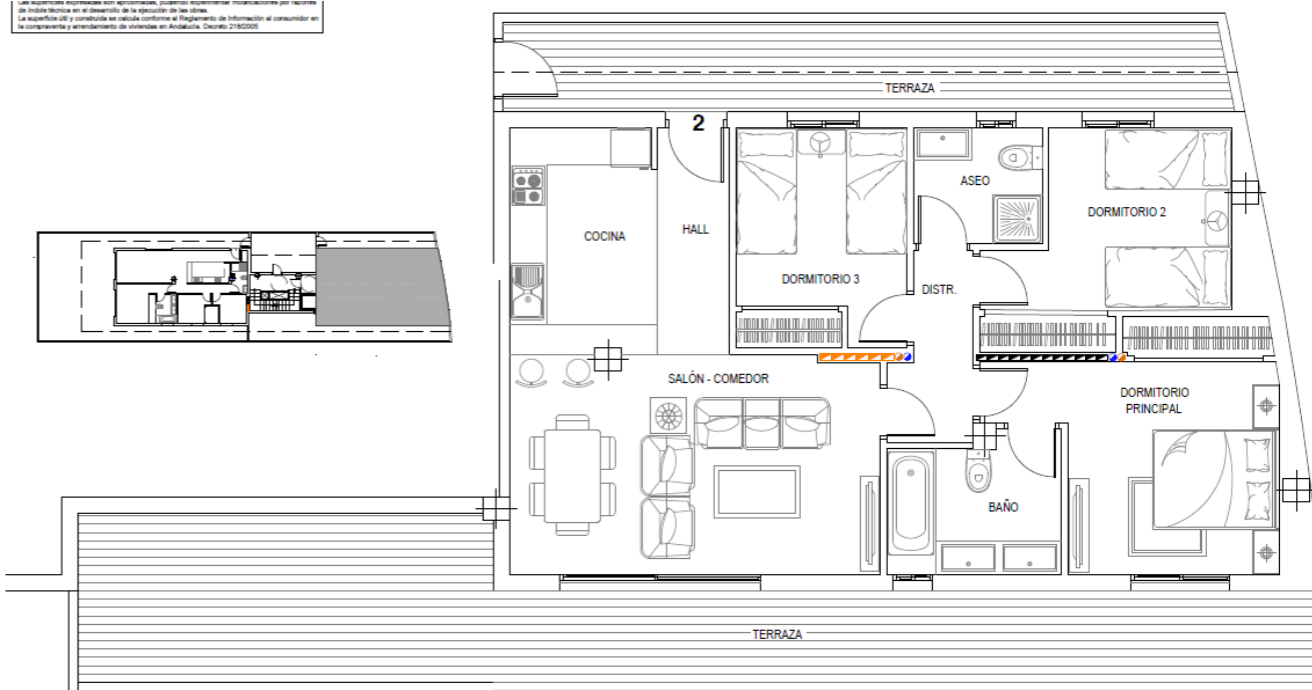
Dormitorio 2



Dormitorio 3

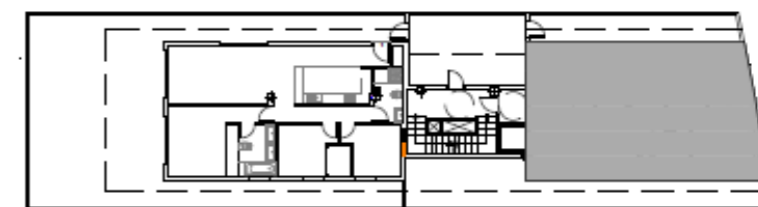
## Penthouse of 3 bedrooms and 2 bathrooms with terrace

Las superficies expresadas son aproximadas, pudiendo experimentar modificaciones por razones de índole técnica en el desarrollo de la ejecución de las obras. La superficie útil y construida se calcula conforme al Reglamento de Información al Consumidor en la compra y arrendamiento de viviendas en Andalucía. Decreto 2/18/2018.



### Cuadro de Superficies

- HALL	3,80 m <sup>2</sup>	
- COCINA	7,70 m <sup>2</sup>	SUPEF
- DISTRIBUIDOR	3,20 m <sup>2</sup>	SUPEF
- SALÓN-COMEDOR	18,75 m <sup>2</sup>	
- DORMITORIO PRINCIPAL	13,20 m <sup>2</sup>	SUPEF
- BAÑO 1	5,35 m <sup>2</sup>	REPAF
- DORMITORIO 2	10,00 m <sup>2</sup>	SUPEF
- DORMITORIO 3	8,65 m <sup>2</sup>	
- ASEO	4,45 m <sup>2</sup>	



SUPERFICIE ÚTIL DE VIVIENDA	74,05 m <sup>2</sup>
SUPERFICIE ÚTIL TERRAZA	46,70 m <sup>2</sup>
SUPERFICIE CONSTRUIDA	85,65 m <sup>2</sup>
REPARTO ZONA COMUN	7,58 m <sup>2</sup>
SUPERFICIE CONSTRUIDA P.P.Z.C.	93,23 m <sup>2</sup>

## PRICES

Groundfloors (with garden) of 2 bedrooms and 2 bathrooms from.....**219.995 €\***

Groundfloors (with garden) of 3 bedrooms and 2 bathrooms from.....**269.995 €\***

Apartments (with terraces) of 2 bedrooms and 2 bathrooms from.....**209.995 €\***

Apartments (with terraces) of 3 bedrooms and 2 bathrooms from.....**299.995 €\***

Penthouses (with terraces) of 3 bedrooms and 2 bathrooms from.....**349.995 €\***

Parking spaces from.....**15.000 €\***

Storage rooms from.....**3.000 €\***

\*10% VAT not included in the price

Salón Comedor



Distribuidor



# edificio Excellence

BENALMÁDENA



Build and Promote



Construye, respeta e innova