

DIAMOND

The Diamond essence

Excellence is our starting point. We welcome our most select clients to dive into the Diamond essence bringing alive carefully designed villas to this book. Each project has a differentiated personality and soul found in the architecture, environment and design. The entrance of each villa is distinguished by a unique plaque to confirm your Diamond identity. A recognition that goes further with the exclusive conciergery service at your disposal. Much more than a home, a lifestyle established through the privileges of Higueraón Resort facilities and services that make the real difference.

In dex



01	Palm 11
02	Villa Sena
03	Bay 8
04	Bay 7
05	Palm 10
06	Palm 2
07	Sky Villa





01 | PALM 11

Design and nature

The avant-garde design and the exterior expression of nature combine to bring Palm 11 to life. The essence of Diamond is apparent in the work of art at the façade by , that takes part in the architecture and design of the property with a unique corten steel sculpture that welcomes you to this unprecedented villa.  has previously worked on other Higueroón Resort projects such as our Higueroón Hotel.



A unique interior design, with rectangular and angular shapes, Palm 11 presents itself as modern and avant-garde. Surrounded by Mediterranean forest and with views of the Bay of Fuengirola, it will allow you to relax and enjoy the moment. The immensity of the living room extends throughout the room merging with the garden out-side. The main floor has a double-sided fireplace and a central patio that leads to the marvellous outdoor areas.

Art in every space

As if it were an art gallery, Palm 11 is surrounded by wood, cut steel, marble, very high and unique ceilings where the lights hang, huge windows that let in the light, merging with the warmth of the inside.





The luminosity that this room acquires is combined with the surrounding exterior garden creating a private and unique atmosphere.



The majestic movie theater, the glass garage and the entertainment area come together to create a space for fun, and comfort.

Leisure and
much more

Villa Sena





An open stage

Characterized by the visual force of its avant-garde style and its spectacular views of the sea, Villa Sena stands out as the most unique villa.

T

he main aim of the project has mainly been to fill the environment with natural light and maximise the luminosity of every room in the house. The unusual nature of its structure makes this villa an exclusive and unique design, both in terms of architecture and its exteriors. A soft and modern garden. An Infinity pool that invites us to relax, spectacular views of the bay of Fuengirola, nature and privacy will envelop you in a fascinating environment.





SIMPLICITY

Luxurious, grand, and minimalist. In the master bedroom, you can enjoy the green views of the garden and the Mediterranean sea.



Bay 8





03 | BAY 8

Marks the great difference

Characterized by the visual strength of its organic forms and its spectacular sea views, Bay 8 has become a unique, magnificent villa that stands out as the Villa that marks the great difference.



The main aim of the Project has been to flood the spaces with natural light and maximise the light in every area of the house. Dressed in white with touches of wood that go hand in hand to create a suggestive visual play of textures. The simplicity of its silhouette, the wise combination of materials and the harmony with the natural environment are the keys to Bay 8. The celebration of a quiet life.



ENDLESS VIEWS

In perfect balance with the landscape, it oozes functionality, design and comfort in equal measures. A wooden panel leads to the spacious walk-in closet in the master bedroom. Surrounded by Mediterranean forest with carobs, pines, olives and aromatic plants, with familiar fragrances such as rosemary and thyme, and with views of the sea on the horizon.





A basement with personality

Large space with private gym, wine cellar and game room.
It has one particular detail that marks the difference: circular led
lighting that dominates the entire space.



PURE TEXTURE

The interior and exterior become one, allowing the views of the Mediterranean Sea and the natural environment to be enjoyed. The combination of sensations favours formal simplicity, comfort and an easy harmony with the environment, providing a welcoming atmosphere.



Bay 7



Magical forms

The unusual nature of its forms makes this villa an exclusive and unique design, both in terms of its architecture and its exteriors.



THE SPLENDOR OF THE LIVING ROOM

The simplicity of its circular silhouette and the wise combination of materials are the keys to Bay 7. The celebration of a quiet life, with views to the exterior pool merging with the Mediterranean sea.



The reflection of nature and the sea envelops the bedroom in its two orientations. The private and intimate dressing room and the warmth of the lighting create an atmosphere of peace, comfort and tranquility



Heaven of peace

The place to be



BASEMENT

Functional space that allows you to enjoy everything from a private gym to relaxing on the sofa watching a movie.



Simple and comfortable, with large sliding glass doors to access the Mediterranean garden that surrounds this villa.

Palm 70





In harmony with the natural environment

Palm 10 is characterized by its rectangular architectural lines, its large windows that flood the space with light and its majestic Mediterranean garden.



Dreamy windows

HUGE WALL OF GLASS

The penetration of reflected light into the rectangular architecture of the interior creates an atmosphere of peace and tranquillity.

The Italian kitchen with wood and marble finishes adds a sophisticated touch to the space, creating an upscale room.





A nest of peace



The master bedroom is very unique due to its spaciousness and the reflection of the exterior architecture. It has a dressing room with warm light and views of the Mediterranean Sea and the local palm grove. It is characterised by its privacy as it occupies an entire floor of this large villa.



STUDY CORNER

Space that allows you to reconnect to the sound of the nature that surrounds you. It is especially separated from the rest of the house, acquiring the added value of privacy that we all need.

Custom design



Home for all

Tangible privacy in this space.
Enjoy the huge sofa while
watching a movie in the
wonderful Home Cinema.

Palm 2





The language of space

The Palm 2 project arises as a result of making the most of the language of space, light, shadows and proportions, which are apparent in a villa that frames the views towards the sea, both to the East, where you wake up watching the sunrise, and to the West of the house, where you can enjoy some spectacular sunsets.

Neutral tones combined with green and yellow to connect nature with the home.



Nature is born
inside the home

The large central patio becomes a key piece around which the whole villa revolves, allowing natural light to enter the home, creating a new body, an open space, a green lung apparent in every room.



LIVING IN NATURE

The outdoor areas are of vital importance in the villa, starting with the ground floor sheet of water, which follows the structure of the kitchen, living room and dining room, creating a unique space where interior and exterior meet and merge. Whether you're preparing a delicious dinner, or resting in the living area, water always accompanies you.



Dawn with a view



More than a leisure area

LEISURE AREA

The patio begins at the basement level. It gives light and a cozy atmosphere to the game room, the gym and also the wine cellar area.





SOLARIUM

On deck, the white volume that surrounds the house becomes a large solarium thanks to the shape. The cut of this white piece generates a great outdoor space, with incredible views of the sea. Enjoy the sunset as you relax in the jacuzzi and enjoy company in the chillout area complete with firepit.



Sky Villa





Mediterranean lifestyle

The most spectacular views of the bay of Fuengirola are found at Sky Villa. Distinguished by its circular shapes, the villa gives the feel of living on a Mediterranean cruise from every point in the home.

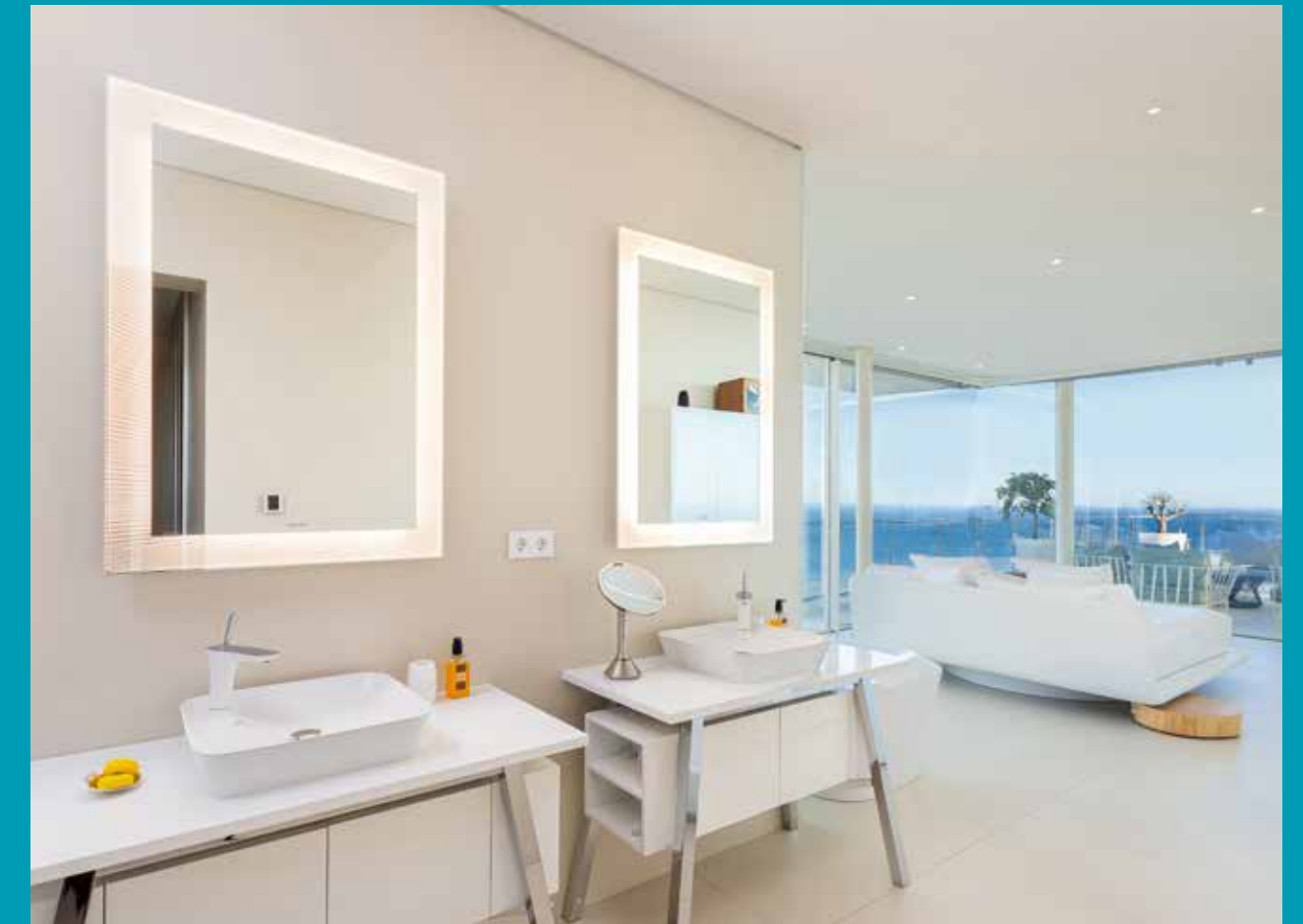


You can feel the true warmth of your surroundings as you enter the main living room and the Italian kitchen with a huge island and wooden surrounds.



Panoramic views

Panoramic views of the sea that
elevates the senses.



VIEWS FROM EVERY CORNER

The master bedroom represents simplicity, with warm details that surrounds the space and full of luminosity. A special bathtub, where you can relax and admire the views of the Mediterranean. An intimate and sheltered sink to maintain the privacy that we all desire. A place of peace, harmony and silence.