



# LUXURY PROPERTIES

FINESTRAT - BENIDORM - COSTA BLANCA

\* The data given in this brochure are approximate and for information only



# About Campana Garden

Campana Garden is a luxury residential complex located in Finestrat adjacent to Benidorm, surrounded by green areas, golf courses, magnificent sport facilities very close to the best beaches of Costa Blanca, and many other good

Contemporary design and architecture are combined in this luxury residential complex, which right down to the last detail respond to the strictest quality standards. Not only in the building materials but also in the finishes.



## THREE RESIDENTIALS

Campana Garden consists of three residences; Skyline, CostaLife and CampanaBay. Skyline and Costalife are equipped with spacious villas with modern design. CampanaBay are spacious and bright apartment. - each with their own luxury features and facilities, while also enjoying the community areas for a quality of life to be admired.

With some uber luxury communal features, residents of the complex can enjoy: communal / private swimming pool, green areas, golf courses near by, amazing and large beautiful beaches, children's play ground area, leisure areas for all family and much more.



## COSTALIFE RESIDENTIAL

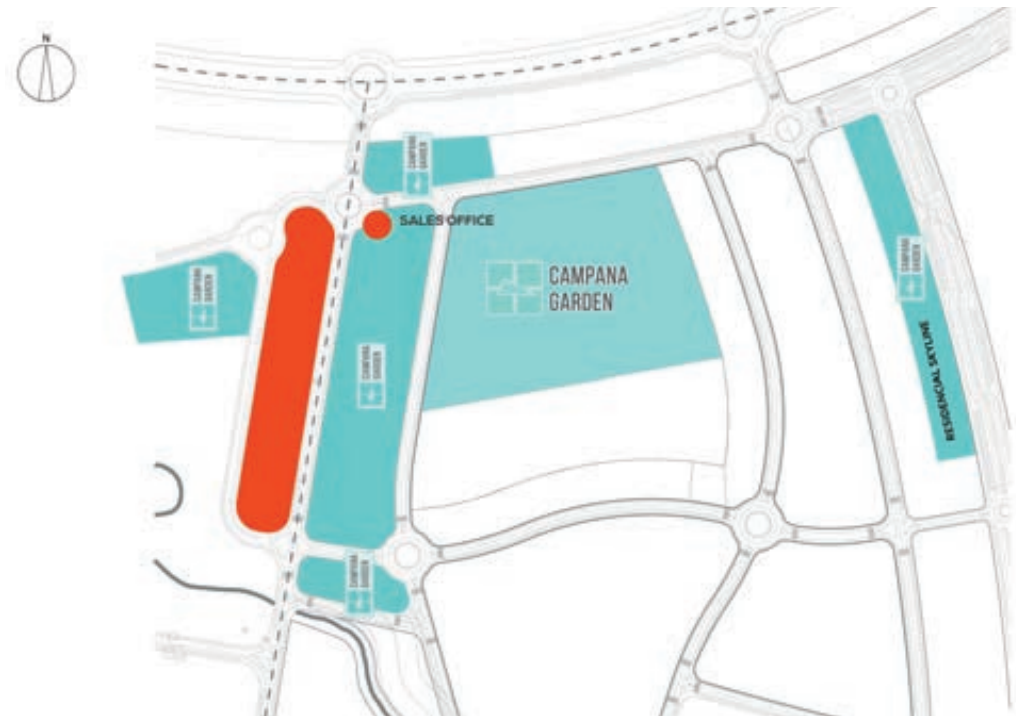
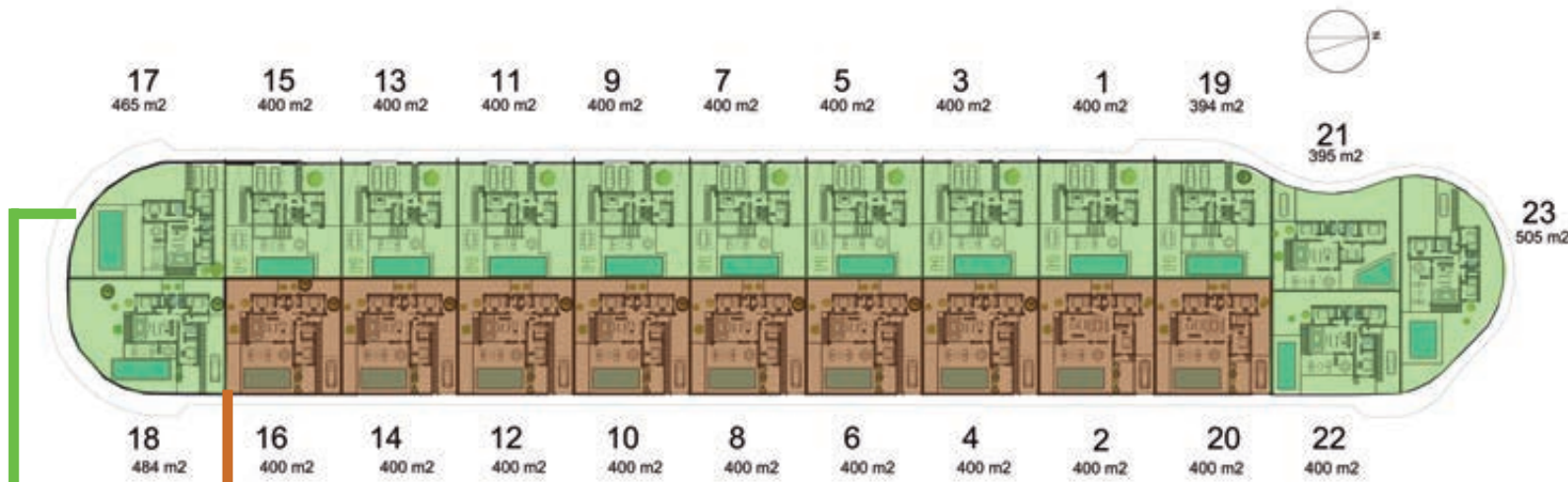
Consisting of **23 detached Luxury Villas**, arranged in two rows from north to south designed such that the views are not disrupted.

All villas are in **plots** of about **400 sq mt.**

For this residential have designed **two different models of villa:**

• **Villa View**

• **Villa Aqua**



## VILLA VIEW

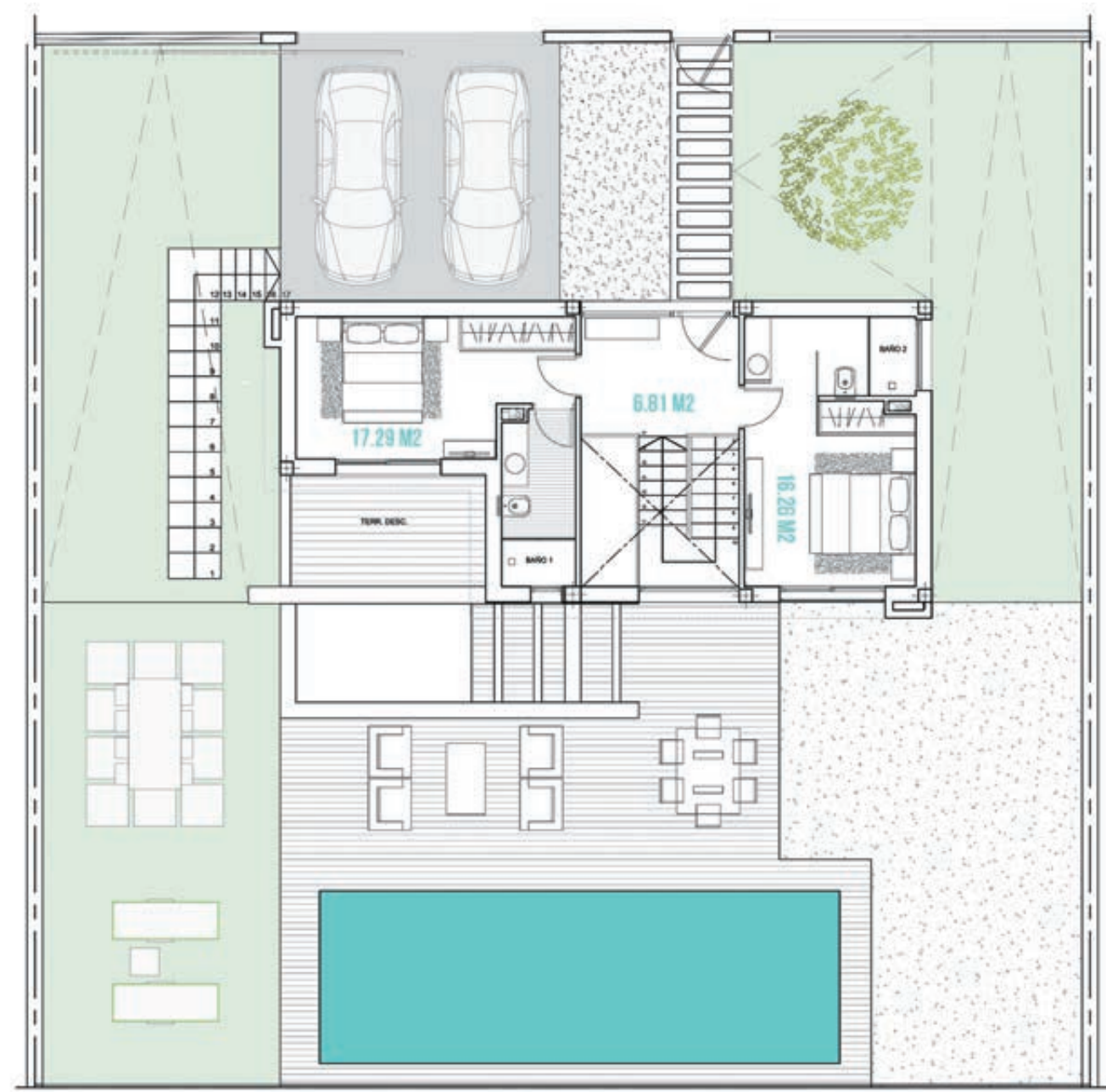
Spacious modern villa with beautiful views and luxury finishes.

In this model it's possible build a basement, for those who wish it.

This villa is distributed on two floors. At the first floor, there is the access to the house and two suite bedrooms (one of them with terrace).

On the ground floor, we can find a spacious bedroom, one bathroom, a bright living room with large windows, and direct access to the pool and garden.



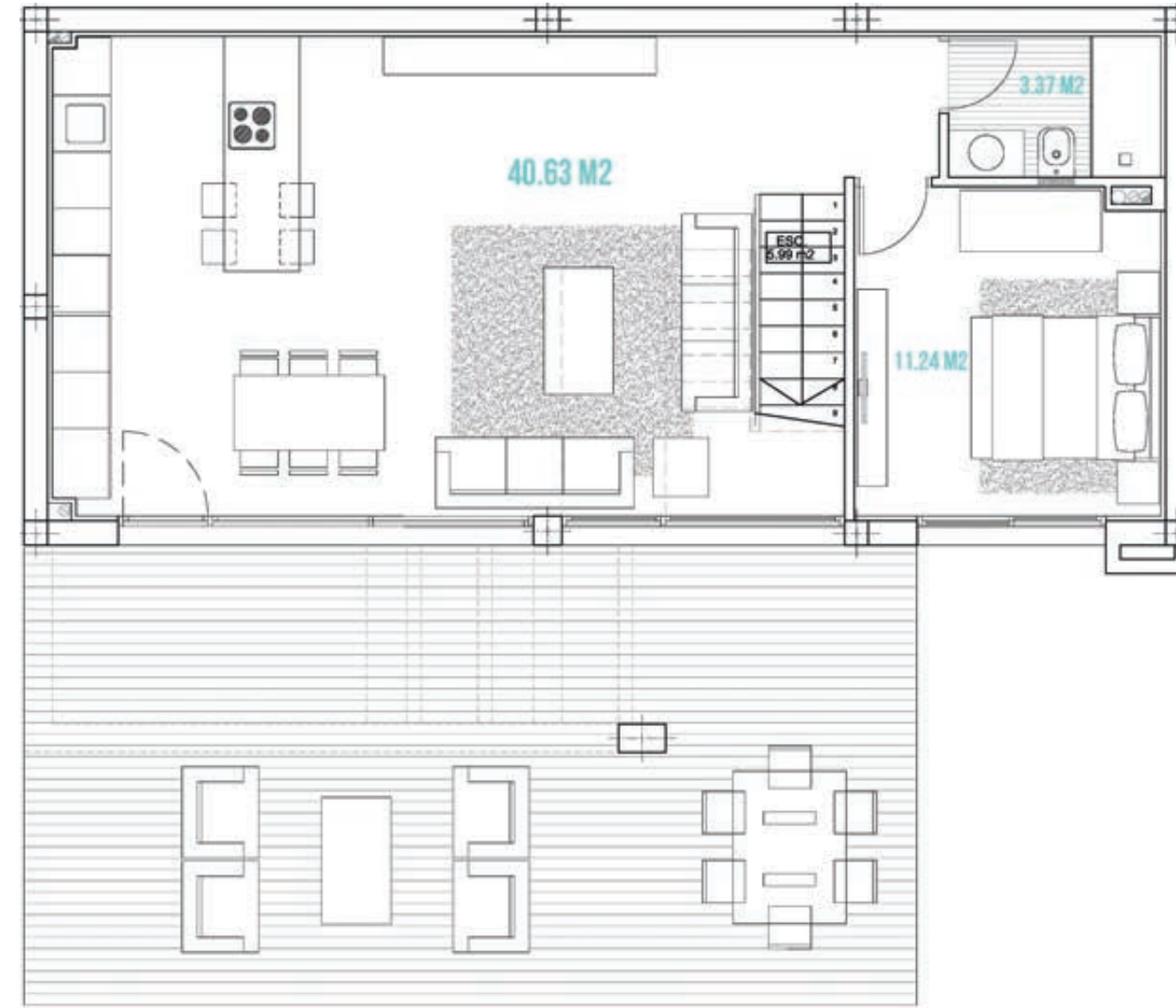
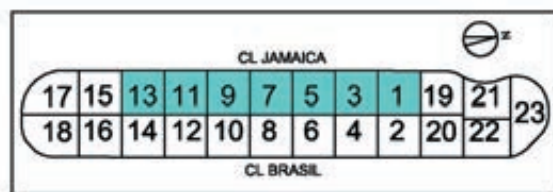


### VILLA VIEW - GENERAL & FIRST FLOOR

#### BUILT SURFACES

Lower floor	70.40 M2
Covered terrace	8.00 M2
House first floor	51.88 M2

TOTAL	130.28 M2
POOL surface approx.	32.00 M2

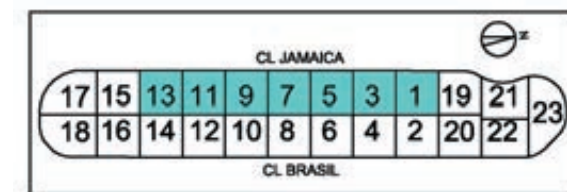


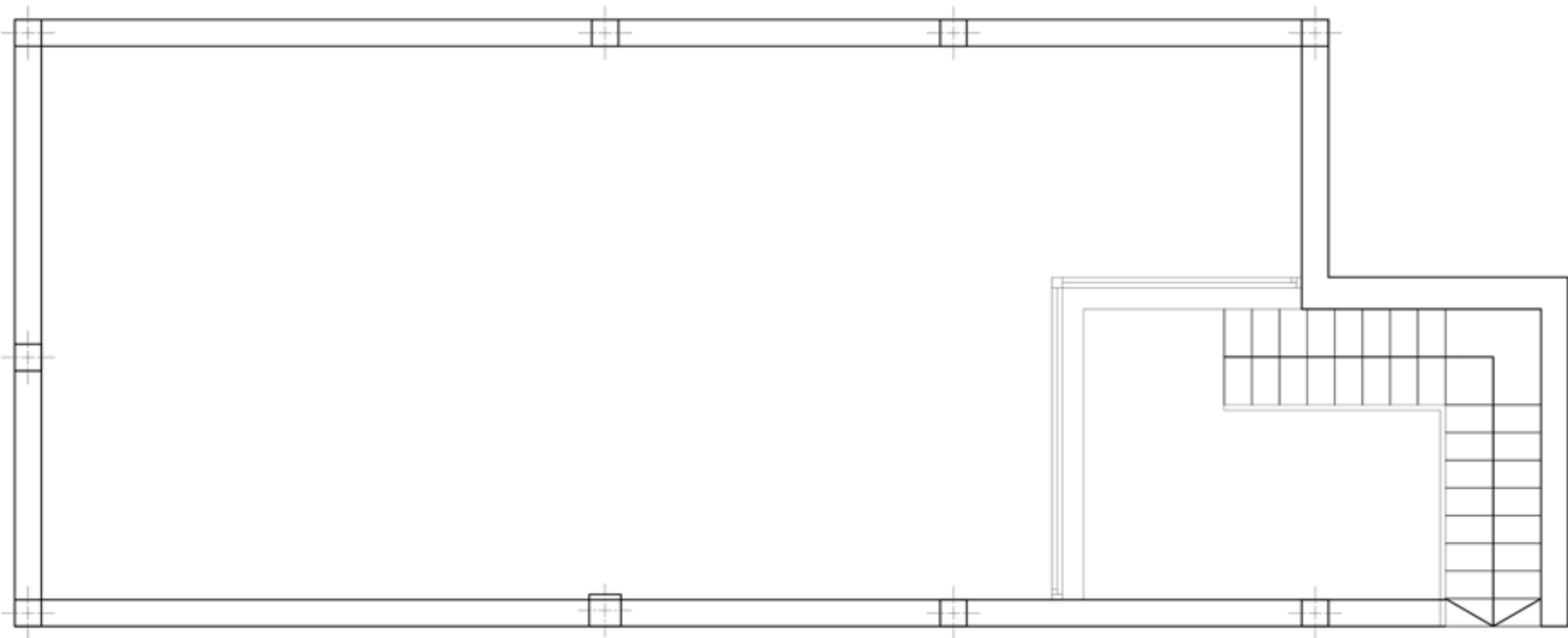
### VILLA VIEW - GROUND FLOOR

#### BUILT SURFACES

Lower floor	70.40 M2
Covered terrace	8.00 M2
House first floor	51.88 M2

TOTAL	130.28 M2
POOL surface approx.	32.00 M2

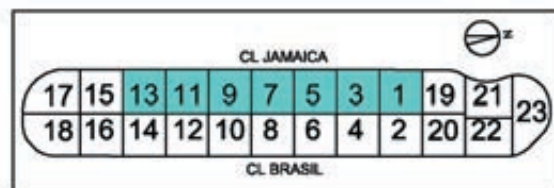




## VILLA VIEW - BASEMENT

### SURFACES

Covered area 54.50 M2  
Opened Area 8.28 M2



## VILLA AQUA

Modern villa designed in one level. It offers a nice terrace and stunning solarium where you can enjoy of the sun, beautiful views to Benidorm and sea, and the Mediterranean climate all year.

This model will be built on plots of up to 504 m2, three bedrooms (1 suite), two bathrooms, laundry area, private pool, luxury finishes, and much more.







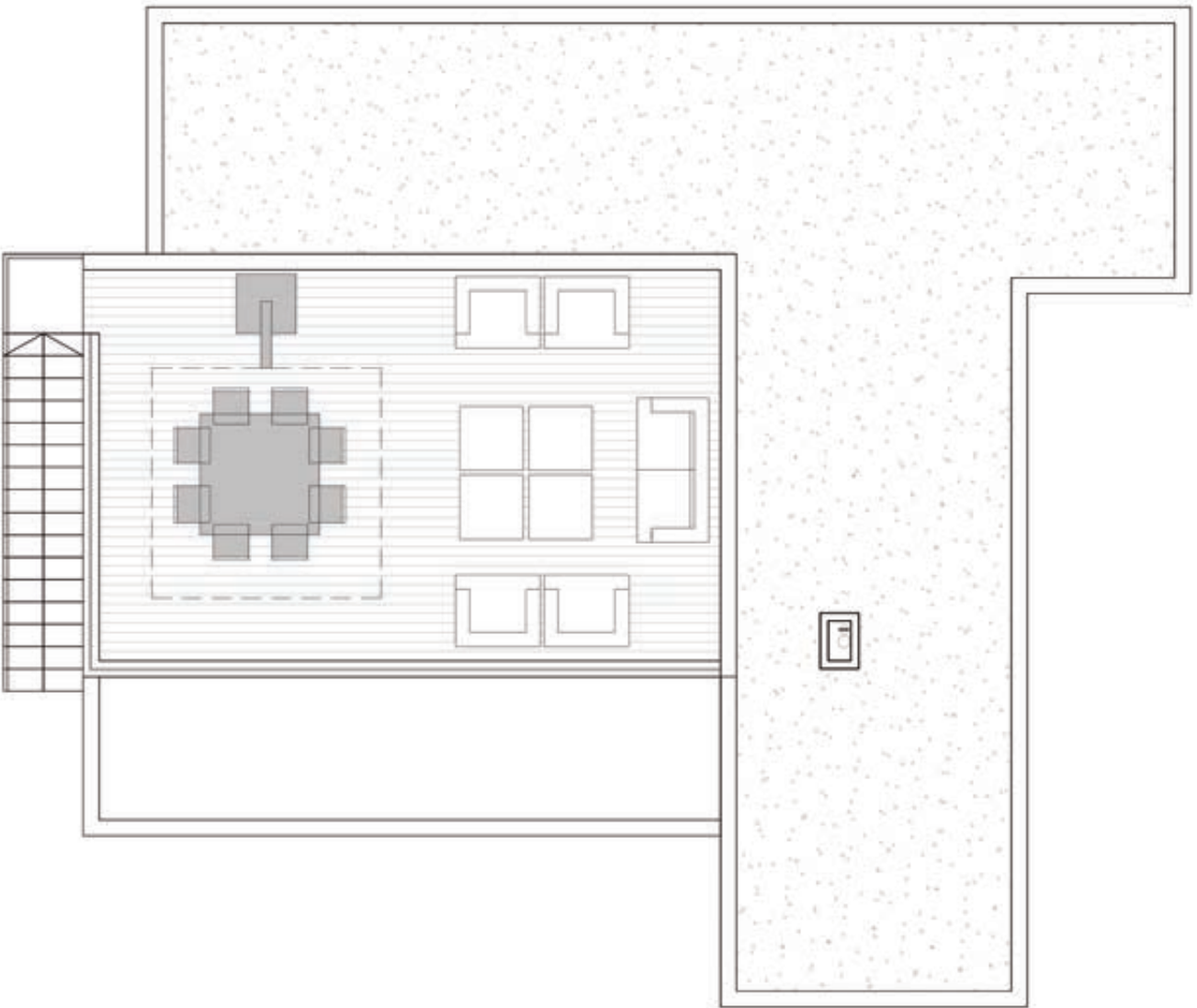
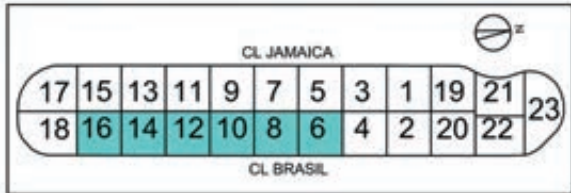
**VILLA AQUA I**

**BUILT SURFACES**

House	116.68 M2
Covered Access	1.50 M2
Covered Terrace	16.00 M2

TOTAL 134.18 M2

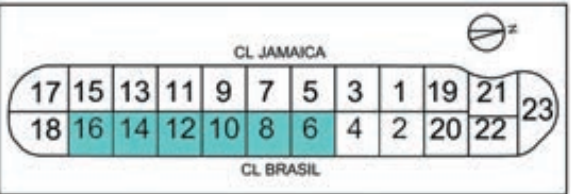
Basement	117.99 M2
Pool surface approx.	28.00 M2
Solarium	38.22 M2
Plot (Approx.)	400 M2

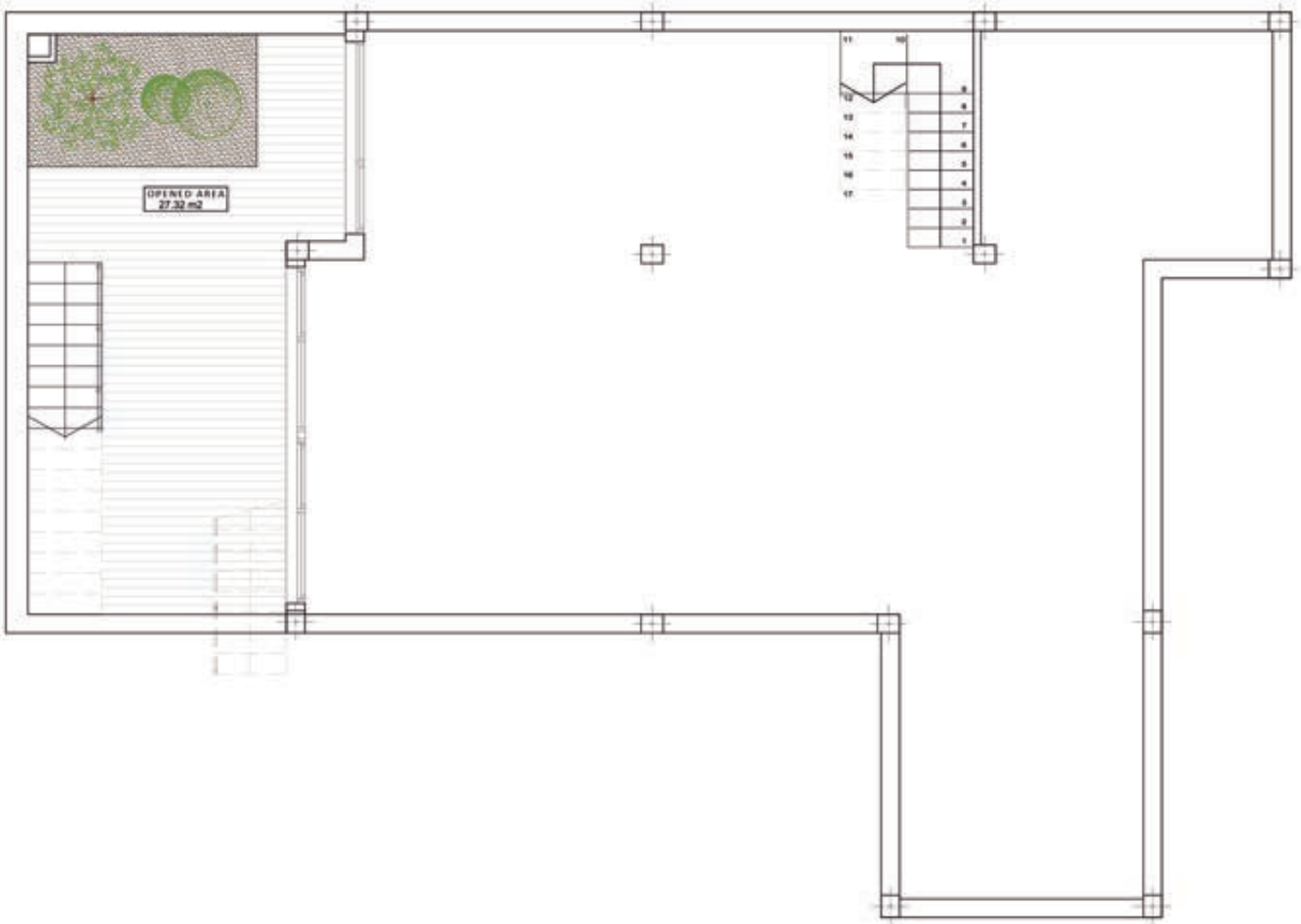


**VILLA AQUA I - SOLARIUM**

**BUILT SURFACES**

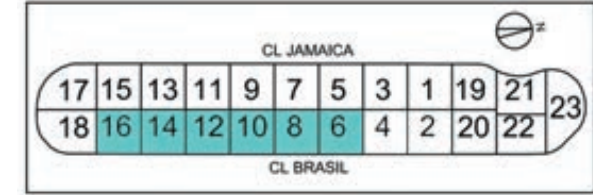
Solarium	38.22 M2
----------	----------





VILLA AQUA I - BASEMENT

SURFACES	
Covered Area	103.31 M2
Opened Area	27.32 M2



VILLA AQUA II

BUILT SURFACES	
House	116.68 M2
Covered Terrrace	16.00 M2
TOTAL	
134.18 M2	
POOL surface approx.	28.00 M2
Solarium	41.61 M2





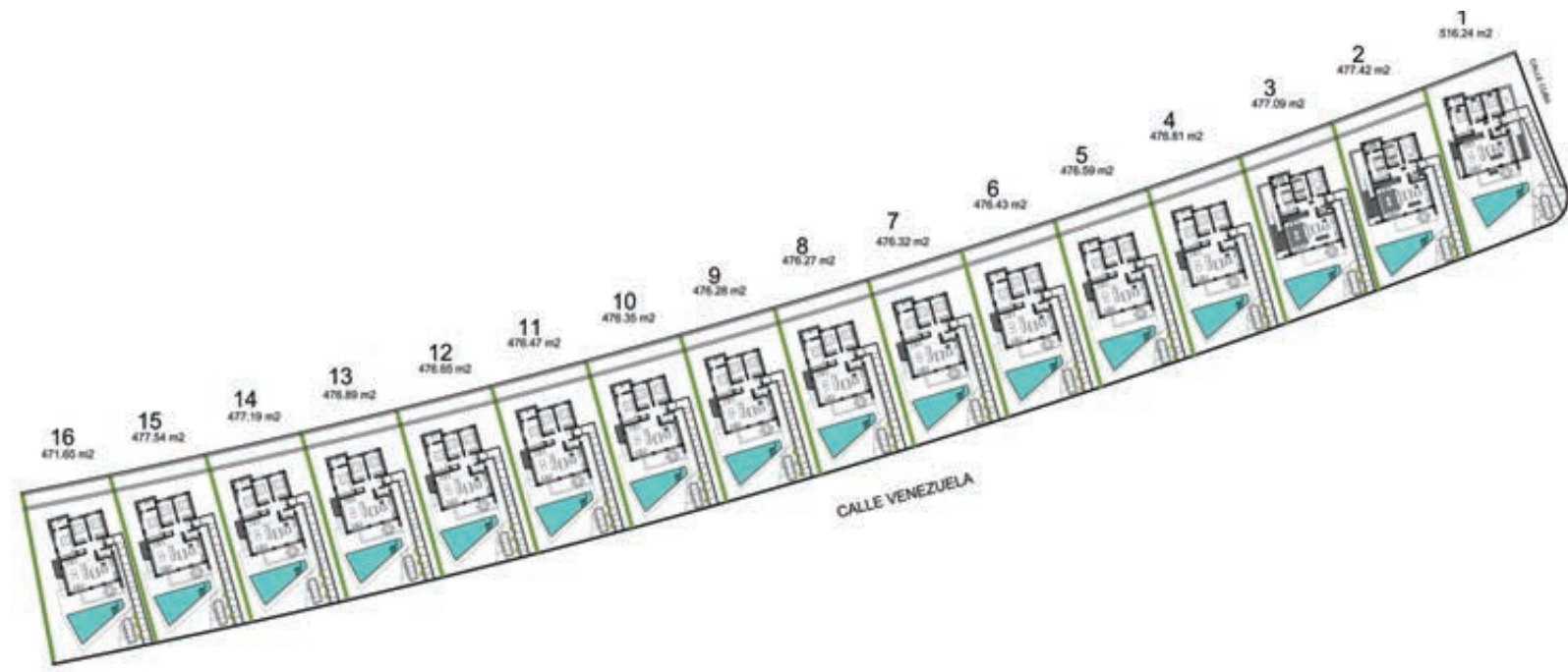
## SKYLINE RESIDENTIAL

Composed of **16 modern villas**, all of them with open views to the Benidorm's skyline.

Arranged in a line from north to south, **exceptional orientation** which let enjoy of spectacular sunrises.

Villas are in **plots** area of about **500 sq mt** with private pool available in all of them.

For this residential we have designed one type of villa.



## VILLA BLUE

**Large modern villa** with beautiful views, located in the Skiline Residential.

This model allows the possibility of building a **basement**, for those who wish it.

Villa Blue is distributed in one floor. Three spacious bedrooms, one of them suite, two bathrooms, a bright living room with large windows and direct access to the pool and garden.

The **design** of this model is **unique** and breaks the aesthetics of its surroundings.





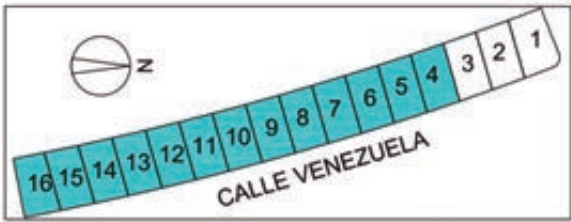
# VILLA BLUE I

## BUILT SURFACES

House	114.95 M2
Covered Access	1.96 M2
Covered Terrace	16.03 M2

TOTAL	132.94 M2
-------	-----------

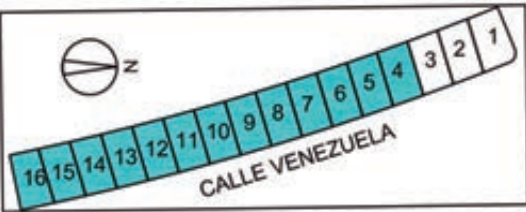
Solarium	40.42 M2
Pool	31.00 M2
Plot size	475 M2



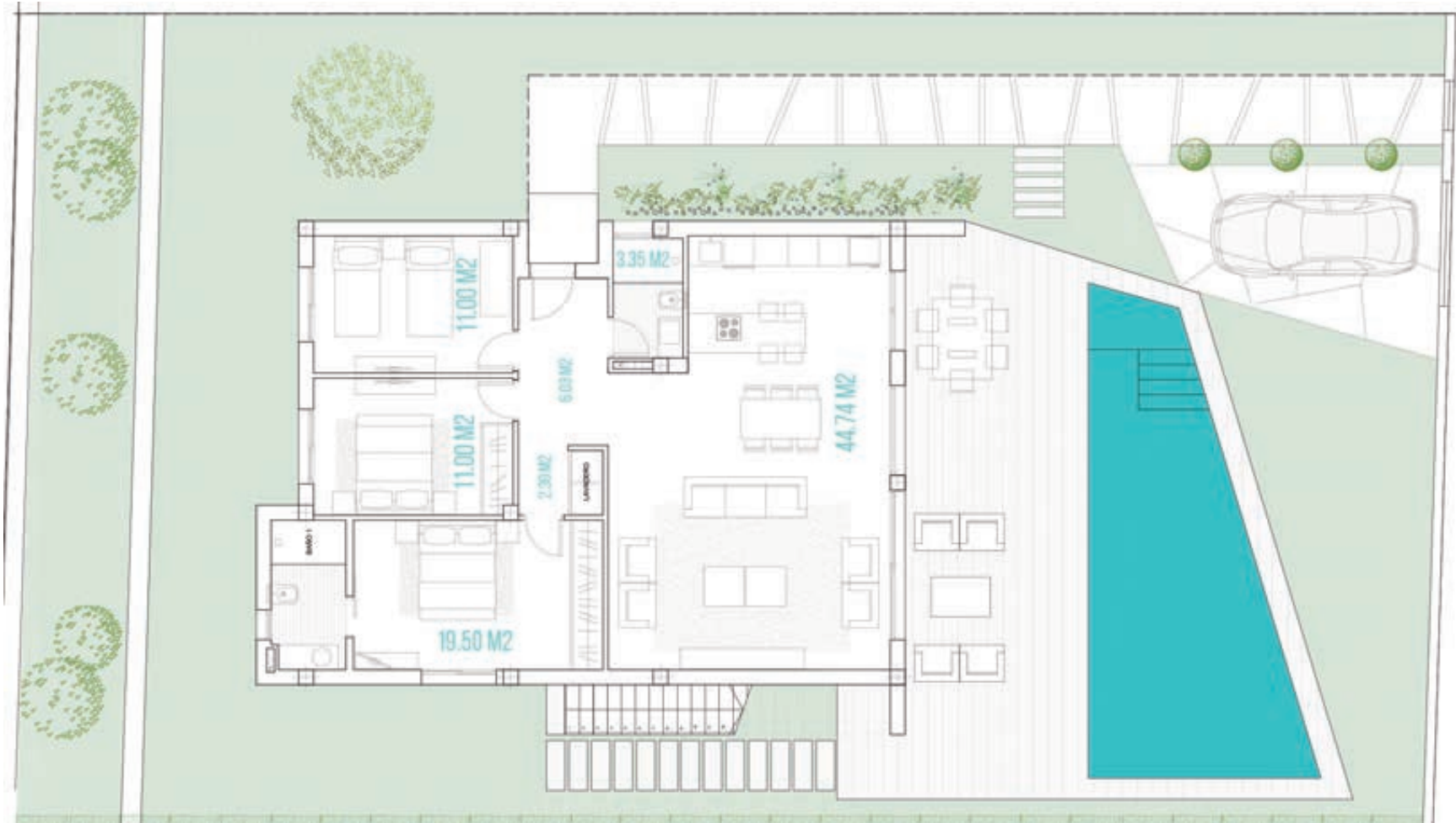
# VILLA BLUE I - SOLARIUM

## BUILT SURFACES

Solarium	4.42 M2
----------	---------

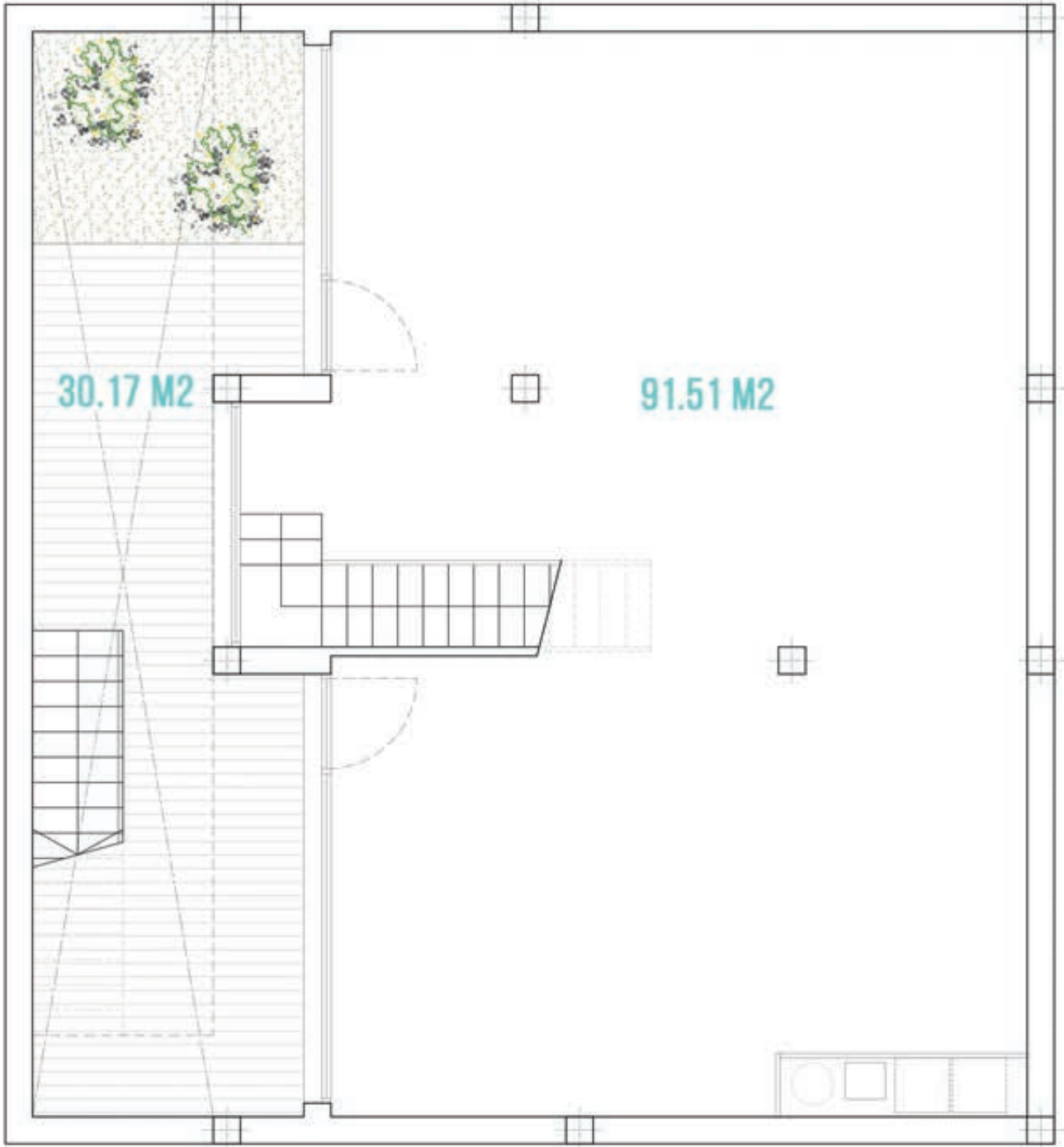
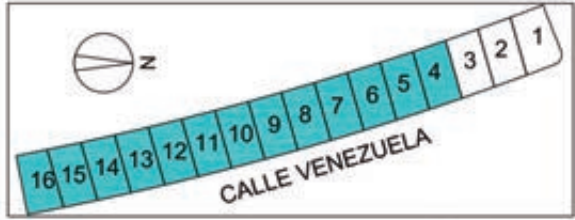






**VILLA BLUE II**

BUILT SURFACES						
House	114.95 M2	Solarium	40.42 M2	Basement	107.86 M2	
Covered Access	1.96 M2	Pool	31.00 M2	Covered Terrace	12.06 M2	
Covered Terrace	16.03 M2	Plot size	475 M2	Open Terrace	26.20 M2	
TOTAL			132.94 M2			
			TOTAL			146.12 M2



**VILLA BLUE II - BASEMENT**

Basement	107.86 M2
Covered Terrace	12.06 M2
Open Terrace	26.20 M2
<hr/>	
TOTAL	146.12 M2





# CAMPANA BAY RESIDENTIAL

General plan of CampanaBay residential complex.



## CAMPANA BAY

Campana Bay is a private residential composed by **44 luxury apartments**.

The houses are set in group of four. Two of them in the ground floor with private garden. And other two on the top floor, with a wonderful solarium.

All our apartments have private parking, communal swimming pool and green areas.

Houses are designed to enjoy of life in the mediterranean.





### CAMPANA BAY - GROUND FLOOR

1. Suite Bedroom	12.91 M2
2. Bedroom 2	10.05 M2
3. Step area	1.53 M2
4. Bathroom 2	2.93 M2
5. Suite Bathroom	3.60 M2
6. Living room	25.87 M2
7. Terrace	9.23 M2
Garden	54.25 M2
Parking	32.03 M2



### CAMPANA BAY - FIRST FLOOR

1. Living room	25.87 M2
2. Suite Bedroom	12.91 M2
3. Suite Bathroom	3.60 M2
4. Bedroom 2	10.05 M2
5. Bathroom	2.93 M2
6. Terrace	8.15 M2
7. Parking	33.68 M2
8. Solarium	79.81 M2



## QUALITY SPECIFICATIONS

- Anti-seismic reinforced concrete structure according to the current regulations.
- Thermal-acoustic insulation throughout the housing enclosure.
- Exterior finish with 1st quality vitrified porcelain tiles and waterproof monolayer smoothed in white color, double coated with water-proof paint.
- Interior walls with smooth paint white color ral 9003.
- Vitrified porcelain floor tiles 1a 22x90 cm and 60x120 throughout the house flooring and skirting tiles
- Steel and glass railings.
- Tiled bathrooms with fully vitrified porcelain tiles
- Kitchen furniture for integrated appliances
- Formation of peninsula furniture, resin type counter top and stainless steel sink. Recessed.
- Vitrified porcelain toilets with built-in-wall water tanks in all bathrooms.
- Design water taps.
- Bathroom furniture with basin on top or flush, according to design.
- Shower screens in tempered glass 6 mm
- Installation of electricity with capacity level of 9,2 kw (high) and Niessen mechanisms.
- Telecommunications and television installation with (Spanish) Digital TV antenna
- Solid interior doors in DM, lacquered in white, measures 0.72 x 2.10 and fixed flush to wall.
- Built-in wardrobes.
- Armour plated entrance door, measuring 90x2,10
- Lacquered aluminum exterior carpentry with thermal break profiles and double glazing, 4 + 4/12/6 climaguard-sunguardian, motorized aluminum blinds in ground floor living room and first floor living room, with lock on the living room windows
- Sanitary hot water with energy saving system (Aerothermic).
- Pre-installation of air conditioning ducts throughout the house.
- Electronic intercom at the entrance of the plot.
- Pedestrian and vehicle access, fenced plot and locksmithery according to Architect design.





# ENVIRONMENT

**Our properties are located on the borders between Finestrat and Benidorm.**

**Campana Garden stands out as a luxury residential development, where a lot of leisure activities can be enjoyed by the all family members, in an environment just made for relaxing, enjoy and rest.**

With a privilege location between the sea and mountains, Campana Garden is close to many facilities like professional golf courses, large and beautiful beaches, leisure areas (theme parks, water parks, culture, camping, ..), hiking and nature areas and much more.



## BEACHES

Beaches like “Poniente” and “Levante” are two strips of golden sand, more than 6 km long, ideal for water sports and tan. Enjoy of the most visited beaches in Europe and the best in Costa Blanca.



## LEISURE

Mundomar, Aqualandia and Terra Mitica are among the many theme parks in the area, where you can enjoy with your friends, family, couple and the most adventurous.



## GOLF

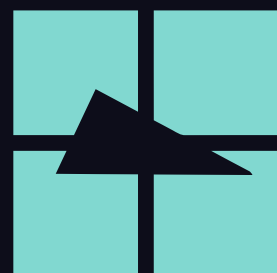
Numerous professional golf courses very close to Campana Garden. Some of them are Sierra Cortina Pich & Pat, Villaitana Golf, Las Rejas Pich & Pat, ... Enjoy one of the most rewarding sports in the area.



## HIKING AND NATURE

Puig Campana (Finestrat) is the second highest mountain of Alicante with amazing views from the top. And Sierra Helada (Benidorm) is a large mountain formed mostly by limestone and at night, when the moon reflects on it, it looks like ice.





CAMPANA  
GARDEN

---

**ADDRESS**

Carrer de Brasil 1  
03509 Finestrat  
Alicante

**GET IN TOUCH**

Phone: +34 670 37 89 82  
[www.campanagarden.com](http://www.campanagarden.com)  
[info@campanagarden.com](mailto:info@campanagarden.com)

**STAY CONNECT**

FB: @CampanaGarden

[WWW.CAMPANAGARDEN.COM](http://WWW.CAMPANAGARDEN.COM)